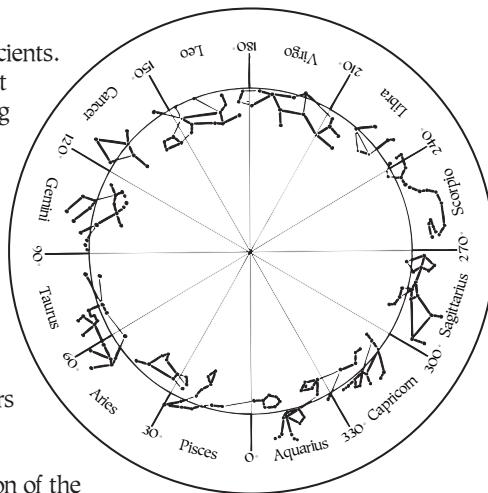


ASTROLOGY MYTHOS

This is the first clock and calendar of the ancients. It is the first constant in nature that does not change over time and they knew this, seeing the ecliptic pole as the Gateway to Heaven and the abode of God. The other constant is a plumb line which always points to the earth's center.

This wheel of the twelve signs of the Zodiac girdles the Sun and is part of a huge cosmic clock for measuring time and tracking the position of the earth in relation to the sun. It does not work without its gears linked to the Northern zodiac.



First the ancients had to measure the position of the Serpent and the Great Bear to tell the time and date, then they could tell what star sign the sun was in front of during daylight. They made almanacs to track it.

The only method of telling the time in ancient era's was to track the position of the sun both night and day since the peoples of the world, quite rightly saw the sun as the Father and maintainer of all life on earth.

In absence of miniature modern electronic and mechanical clocks or calendars, our ancestors had to rely on the only mechanical device that they could observe and that was the motions of the sun, moon and planets across the face of the fixed stars.

To recognize these stars, our ancestors joined the lines between groups of them to make an imaginary (Images) and in a universally and easily recognizable form for the use of other observers and to pass the information down through the generations. It is not important to argue what civilization used what images, it is only important to understand the principles involved.

The Sumerians, Egyptians, Chinese, Indians, Maya and the Greeks all created their own images of these groups of stars whereas the Inca used the spaces or shadows between the stars to make images of their zodiac constellations. The most well known of these are the Llama, the Condor and the Toad, however it was the Greek system that we adopted and still use in astronomy today, it is known as a zodiac, named thus after the word zoo for animals making the full meaning of the word zodiac as meaning a circle of animals.

The purpose of this 360° circle is to place the sun, the moon and the planets on the plane of the solar system known as the ecliptic so that you can see clearly their position against the stars behind them.

The 360° circle is divided into 12 signs of the zodiac, each sign all though not equal to exactly 30° fills the area for recognition purposes only and allows the ancient astronomer to recognize which segment of the circle he is observing. The degrees being observed are subdivided into 60 minutes of arc of which the cross and plumb line are quite capable of measuring.

The Zodiac: The word "zodiac" comes from the Greek zodiakos kyrklos meaning "circle of little animals". The concept was adopted or taken from the Babylonians, who had previously determined that the sun passed through twelve "signs" whose figures (lion, bull, crab, etc.) could be "drawn" by connecting the "dots" (stars) in certain constellations. The Greeks then explained, with myths, how the figures (animals and people) came to be in the sky. The zodiac was initially divided by the ancients into 12 equal parts, proceeding from west to east (each part 30 degrees), and distinguished by a sign; these originally corresponded to the constellations bearing their names, but through the inexorable precession of equinoxes, this is no longer the case.

CHINA: The oldest evidence of astrological study and practice are found within China. These developments predate those of Mesopotamia, dating back thousands of years. The ancient Chinese were meticulous in preserving their astrological records. Even today we may respect their comprehension of the heavens. By 2001 BCE the astronomers of China had determined the length of the year to be 365 days as well as the cardinal points of direction. They also clearly mapped the paths of the Sun and Moon well enough to predict eclipses. The Chinese animal signs are a 12-year cycle used for dating the years. They represent a cyclical concept of time, rather than the Western linear concept of time. The Chinese Lunar Calendar is based on the cycles of the moon, and is constructed in a different fashion than the Western solar calendar. In the Chinese calendar, the beginning of the year falls somewhere between late January and early February. The Chinese have adopted the Western calendar since 1911, but the lunar calendar is still used for festive occasions such as the Chinese New Year. Many Chinese calendars will print both the solar dates and the Chinese lunar dates.

The Chinese zodiac has a Year Tree with Twelve Terrestrial Branches and with the Beasts of the Constellations beneath the branches. The beasts are the Rat, Ox, Tiger, Hare, Dragon, Snake, Horse, Goat, Monkey, Cock, Dog, and Boar.

INDIA: Current records in Bharat indicate a well developed knowledge of astrology dating back to far ancient times. Remnants of work still exist from sometime around 3,500 BCE. Although most of the original manuscripts were lost, certain Astrologers reproduced their own versions of these earlier works. Some of these copies can be found in libraries belonging to Maharajahs.

Apparently, Indian astrology was held in very good standing elsewhere in the literate world of the time. In his book, *Ancient Calendars and Constellations*, E. M. Plunkett writes "The opinion of the Greek writers at the beginning of the Christian era may be quoted as showing the high estimation in which Indian astronomy was held. In *The Life of Appollonius of Tyana*, the Greek philosopher and astrologer, written by Philostratus about 210, the wisdom and learning of Appollonius are set high above his contemporaries because he had studied astronomy and astrology with the sages of India."

The Hindu zodiac (the rasi chakra, "wheel of the signs") has the Sun Chariot at the center surrounded by planetary deities, with the outer circle having the signs in the Egyptian order. There is also a moon based vedic zodiac which claims to be the oldest zodiac system created and those claims could well be true. There is evidence that the vedic kingdoms were the originators of a lunar based zodiac that they shared with early Mesopotamians and Minoans.

There is still much that remains unknown about the function of ancient megalithic monuments found throughout the world. In most cases it is still uncertain who the actual builders were. What we do know, from contemporary observations, is that most of these sites were used for astronomical observation. The dominant theory places their function within agricultural ritual.

“Astrology does not offer an explanation of the laws of the universe, nor why the universe exists. What it does, to put it in simplest terms, is to show that there is a correspondence between macrocosm and microcosm. In short that there is a rhythm to the universe, and that man’s own life partakes of this rhythm.” (This also serves as a definition of Stoicism)

- Henry Miller

MESOPOTAMIA: Astrology’s ancient beginnings are also traced to Mesopotamia at least as far back as 2001 BCE. These early records reveal a complex cosmology in which the Sun, the Moon and the planets represented gods who possessed the power to direct and intervene in the course of physical events. It is believed that the first zodiacal constellations were named near 5600 BCE when the four constellations corresponding to the Spring Equinox (Gemini), Summer Solstice (Virgo), Fall Equinox (Sagittarius), and Winter Solstice (Pisces) were defined. **GEMINI:** Heavenly Twins, the children of the supreme Sun God – symbolizing Life, Creation and The Beginning.

VIRGO: Pregnant Mother Goddess holding an ear of grain – symbolizing fertility and bounty.

SAGITTARIUS: A Centaur or Mounted Hunter -- reflects autumnal symbolism of the celestial hunter shooting and wounding the sun with his arrow and causing its descent into the Underworld.

PISCES: A Pair of Fish – perhaps representing the waters of the Underworld. Except for Pisces, the Gemini Quartet is Human, possibly representing the human life cycle.

Over time, the equinoxes and solstices no longer corresponded to these constellations of the Gemini quartet because of the earth’s precession. By approximately 2700 BC, the shift was sufficiently great that a new quartet was required to mark the equinoxes and solstices, and the Taurus quartet was defined. Over this period of nearly 3000 years, the socioeconomic conditions in the Near East had changed. Earlier largely agriculture-based and possibly nomadic societies had given way to urban societies whose religious life was led by a hierarchy of priests. Supreme deities with male traits of strength and virility displaced female deities representing fertility, and anthropomorphism appears to have giving way to idols often in the form of animals.

Taurus Quartet

TAURUS: The Bull – An important figure in Ancient Asian temples; a symbol of (Male) Virility/Fertility and Strength.

LEO: The Lion – another important worship figure; sign of power, in this case of the Sun at the height of the summer.

SCORPIO: The Scorpion – reflects autumnal symbolism of the mighty Sun being stung (wounded) and falling from the sky.

AQUARIUS: The Water Bearer – a water-connected figure and the symbol of the Underworld.

In another 1300 years, the constellations and the sun’s position at equinoxes would have been sufficiently out of sync that yet another quartet of constellations, the last quartet, was put in place. This last quartet, the Aries Quartet, was defined in approximately 1200 BC when the Sun would have been in the constellation of Aries on March 21st. The symbolism of the new quartet once again reflects the changing cultural situation. Generally the constellations are not of Babylonian origin; the Old Testament warnings against the cults of idols were on the rise; monotheism was in ascendancy; art images and parables for their own sake had become common in literature. The last quartet is supposed to reflect all these developing elements.

Aries Quartet

ARIES: The Ram or The Sacrificial Goat – strongly connected to spring rituals throughout written history of the region and in religious texts, for example, Abraham’s sacrificial ram.

CANCER: The Crab – sideways motion of the crab may be related to sun’s apparent motion in the sky; the sun moving only sideways across the sky at summer solstice, not up or down.

LIBRA: The Scale or Balance – possible reference to balance between day and night. The Akkadian name for the constellation that we call Libra translates to mean the horn of a scorpion, a possible reference to the scorpion’s stinger. This latter designation fits in with the previous autumn constellations suggesting that the constellation’s name must have been changed to Libra after the fact.

CAPRICORNUS: The Goat-Fish – a water-related creature of ancient Sumerian origin representing the underworld.

With the establishment of the final quartet, the zodiac constellations as we know it were all in place. The present-day astrological associations with the constellations are based on the location of the sun over the course of the year as observed by Babylonian priests-cum-astronomers over 3000 years ago. The earth’s axis continued to precess (wobble) and as in the past, the constellations and the sun’s location slowly moved out of sync. Today, the sun is located somewhere between the constellations of Pisces and Aquarius on March 21st. This also means that everything in the skies happens about a month later than when the ancient observational calendars of the Egyptian, Mesopotamian, Chinese, etc. were constructed, a fact that has been in mind by archaeologists and historians.

BABYLONIA: These early concepts progress through the growth of Babylonian civilization. Fundamental to this world view, was the idea that the planets had a divine nature and the ability to influence human destiny. The Babylonians established a pantheon of gods based on the planets, each possessing dominion over a particular area of human experience. For instance, Mercury, the god of the intellect was seen as quick and cunning, with a special quality of calculating intelligence. Mars was seen as the ruler of violence and war; Jupiter, a kingly figure and sovereign of men; Saturn, quick tempered and cruel.

Here we can begin to recognize the basic forms of Astrology as we know it today. As Babylonian Astrology evolved, a correlation was recognized between happenings in the heavens and events on earth. Today, the Arabian zodiac is represented as a fruit tree with twelve branches on which the stars appear as fruits. The Islamic zodiac has six northern and wet signs, and six southern and dry signs. Aries, Leo, and Sagittarius represent the East, fire, hot and dry. Taurus, Virgo, Capricornus represent the South, earth, cold and dry. Gemini, Libra, and Aquarius represent the West, air, hot and wet. Cancer, Scorpio, and Pisces represent the North, water, cold and wet.

CHALDEA: From ancient Babylonia, we follow Astrology to the fascinating, yet mysterious, Chaldeans. These Mesopotamian people are famed in history as magicians and sages. Two most noted figures were Belshazzar and Nebuchadnezzar. They reigned for nearly 100 years during the seventh century BCE.

The Chaldeans were keen observers and mathematicians. They recognized that the events in the sky followed a pattern. They watched the stars move in fixed order across the heavens and the planets wandering in eccentric orbits, though in much the same plane. It was apparent to them that although the planets had their own individual movement they behaved in coherent cycles. It is here in Chaldea, that the charting patterns of the planets began. The very first Ephemeridae, tables of planetary motion, were constructed during the reign of King Assurbanipal. In preparation of the new cosmological system, the Chaldeans made use of the twelve main constellations through which the Sun and Moon regularly pass. These were the precursors of the zodiac.

ANCIENT EUROPE: The great importance attached to the movements of the Sun, Moon, planets and stars was not limited to Asia and the Mediterranean basin. Throughout the world are found systems of Astrological study. In Western Europe this is attested to by the many megalithic sites spread across the continent, and in Britain. It has been documented that one of the principal functions of these sites was to compute the yearly movements of celestial bodies.

The monument at Stonehenge in England is perhaps, the most impressive of these sites. It possesses a sophisticated method of calculating a calendar with great accuracy. The positioning of its stones pinpoints the solstices and predicts eclipses. The layout of this stone circle was submitted to computer analysis, and a wide range of alignments were found showing this monument to be a gigantic megalithic computer. Radio carbon dates estimate that it was constructed about 2500 BCE. It is, indeed, a outstanding and baffling achievement for this Bronze age civilization. Equally impressive, in its astronomical exactness, is the stone work of Newgrange in Ireland. Thought for a long time to be merely a large passage tomb, this 5,000 year old structure is in fact an observatory which the ancient Iris used to mark the solstice point of winter. Just before 9 a.m. on each December 21, the shortest day of the year, the morning sun enters a small 8 inch portal and ignites the interior of this impressive mound. Evidence that these earlier people were not only skilled architects, but learned astronomers as well.

EGYPT: The Egyptian Pyramids remain singularly impressive to this day among all ancient astronomical buildings. They are aligned to the North Pole and the cardinal points. They were set so accurately, that a 1/12 degree deviation was discovered and accounted for by scientists as Africa's participation in the 'continental drift', rather than an error in Egyptian engineering. The Egyptian zodiac (Denderah) depicts the northern constellations at the center surrounded by the signs and has a Scarab replacing Cancer.

The pyramids served a dual purpose; burial place of the pharaohs, and astrological calculators. There are sloping corridors leading from the faces into the interior. These were used as sighting tubes, allowing Egyptian astrologers to make naked-eye observations of great accuracy from which astrological calculations were progressed.

GREECE: Important to the foundation of Greek Astrology, was a Babylonian, named Berossus, who lived about 250 BCE. His writings had a great influence on early astrological concepts in Greece. Unfortunately, no manuscripts of his work have survived. Berossus established a

school of Astrologers on the Island of Cos.

During the next 400 years, the Greeks zealously converted Chaldean Astrology to their own traditions. Here, it became formal and complicated. The Greek tradition is credited with developing a system of diagnosis; and a method of calculating individual destinies based upon the moment of birth.

The Greeks also associated myths with the star groups. The heavens became an array of sacred objects, monsters, animals and heroes. They added human qualities to the heavens in constellation figures which embodied arrogance, love, fear, strength, compassion, vanity and tenderness. Alongside this mythological view, another based on geometrical and mathematical relationships was seeded in Greece. Science began when the Greeks applied mathematics to the study of the heavens.

Ptolemy's Universe: By about the third century BCE, Aristarchus calculated the distances to the Sun and Moon. His calculation for the Moon proved correct, but he was way off on the Sun. Still impressive, as he did this measuring without the availability of Instruments.

Such tools were finally invented by Hipparchus. His instruments were so accurate that by 150 BCE he determined the length of the year to within six minutes. Three centuries later Ptolemy relied almost entirely on Hipparchus' data as the basis of his world system. Ptolemy constructed a model of the universe that could explain the retrograde movements of the planets as well as the variations in their speed and brightness. The Ptolemaic model of the universe dominated Western thought for over 1400 years. The first textbook of Astrology, The Tetrabiblos, was written by Ptolemy.

The Renaissance: When literacy became more widespread, almanacs began publishing astrological information for public consumption. Several notable figures of the era, including Galileo and Copernicus, were both practicing astrologers and founders of the modern scientific movement. Despite the seemingly easy relationship between Astrology and science, however, Astrology began to lose popular credibility when myriad predictions about the great conjunction of 1524 failed to "come true."

In 1543, it was Copernicus who put the sun at the center of the universe. This was the same premise that had been held by Aristarchus in the middle of the third century. Old ways die hard, and the Copernicus system was not accepted for another 100 years. It was the work of both Kepler and Newton that dealt the death blow to the Ptolemaic system. Kepler found that the planets actually move in ellipses, not circles, and Newton explained why. Kepler believed only those people who had never studied astrology could possibly deny it.

In 1687, Issaac Newton's book 'Principia Mathematica' opened the door to the modern era of studying the heavens, called astronomy. This was the beginning of the decline astrology which would suffer until the mid-19th century.

As the Scientific Revolution surged and astronomy gained respect, Astrology and various other arts fell by the wayside. Many individuals still practiced the art, however, and Astrology enjoyed small revivals in England in the 1700 and 1800's. But it wasn't until the birth of Princess Margaret in 1930 that Astrology once again found widespread popularity. That year, the London Sunday Express ran an astrological profile of the princess to celebrate her birth and so began the modern newspaper horoscope column. In the 1950's, French astrologers Michael

and Françoise Gauquelin used sophisticated statistical studies to link the positions of the Planets to human nature. Others, such as Dane Rudhyar, have expanded the study of Humanistic Astrology.

Modern Astrology Symbols: Western Tradition



Aries (First sign: March 21 - April 20) Symbol: ♈ Means "The Ram" in Latin. Greek word is Krios. A constellation in the Northern Hemisphere near Taurus and Pisces.

The friendly, talkative ram with the Golden Fleece who was sought by Jason and the Argonauts in their famous adventure. One legend is that it rescued Phrixus and Helle from being sacrificed as an oracle had decreed [brother and sister, respectively, who were borne upon its back and carried across the sea (named Hellespont because Helle fell off into it)]. It was sacrificed as a thank you offering to Zeus by Phrixus and elevated to the heavens as a reward by him afterwards. Aries is the symbol of Spring. The early Chaldeans sacrificed a ram at the time of the planting season in March.

Aries are fire signs and those born under this element are regarded in astrology as adventurous, active and outgoing. It won't matter where you go or how remote or unusual it is - from the Outback to the Antarctic - you can be sure that an Aries has been there before you (or at the very least you will meet one along the way!) Aries is a uniquely naive sign. Although they are independent, outgoing and assertive they are also surprisingly trusting, often innocently walking into the lion's den at times. No matter what upheaval, challenge or triumph they confront - an Aries has a wonderful ability to bounce back. Their faith in life and the future remains untouched by hardship. Their gift is that they are always children at heart and the world is always a magical place for them. Many famous sports people are born under this sign. Aries is regarded as the most physical sign and because of its Mars rulership; it is also one of the most highly charged masculine energy signs in astrology. No wonder women born under Aries are forceful, dynamic and aggressive, and as a result these Aries women frequently find themselves with dilemmas surrounding their romantic relationships. For them, a man has to be a 'real man' to deal with an Aries woman, otherwise she intimidates him. And conversely for the Aries male, a woman has to be a real woman to deal with him, because he is looking for many balancing component traits (his true feminine side) in his partner. She has to run the gamut in his support system, from the Aries man's best friend, true companion, through to his muse, and yet she must never ever answer him back!

Therefore Aries can be a confusing sign because there is a complex combination of very strong masculine and feminine expressions all combined together. Because of the male energy surrounding it, when a woman is born under Aries, it creates some of the most interesting women in the world, women who are adventurous, independent and have competitive natures. It also tends to make them very forthright.

But whether male or female, Aries people are 'doers' rather than 'talkers'. They are the impulsive, act first, ask questions or have doubts later, sign of the zodiac. That's why their lives are often filled with many dramas and sometimes even accidents! Their ability to live life close to

the edge provides them with a wealth of 'real experience' to call upon. When an Aries person talks about something or somewhere they've usually done it or been there, rather than simply read about it in a book. Being active people Aries can't adapt to any kind of restriction, particularly possessive relationships. They often travel to escape any feelings of being stuck or possessed. Aries people love challenges. In fact, if everything is running smoothly, they are quite capable of going out and doing something (sometimes quite foolish) to rock the boat. Aries love to race in where angels fear to tread.

If you were born on the first or last day of a Sun sign, in astrological terms you were born on a cusp. If that's the case, you will probably benefit from reading your own Sun sign and the Sun sign that ends or begins right before or after your date of birth. For example, if your birth date is 22 December, your Sun sign is Capricorn, but you probably have some Sagittarian traits as well.

Characteristics: Gender-Male, Element-Fire, Gem-Ruby, Metal- Iron, Color: Red, Planet- Mars



Taurus (Second sign: April 21 - May 21) Symbol: ♉ Means "The Bull" in Greek. Greek word is Tauros. A constellation in the Northern Hemisphere near Orion and Aries.

This is the bull who carried Europa across the sea when Zeus became "interested" after seeing her bathing or, as in many versions, Zeus himself disguised as a bull. Taureans are said to be stubborn and determined but also patient and slow to anger. They love nostalgia and stories and never show signs of change.

Underneath their cool, calm and collected exterior, Taureans differ greatly from all the other signs of the zodiac. Taureans manage to discreetly stay apart from the crowd, even though they have a well-earned reputation for being socializers. They will let others get close, but only so close as they want them. Some claim that trying

to get your point across to a Taurean, should they not want to hear you, is rather similar to talking to the trees - they simply won't budge. And, there is no such thing as an open-book Taurean. Their feelings, fears and desires often run far deeper than anyone around them would guess. Like the butterfly that chooses to remain hidden in its cocoon until it is ready and prepared to emerge, so the true Taurean spirit remains hidden behind a veneer of day-to-day activities. That's why Taureans are sometimes regarded as snobby, withdrawn, boring, or even sulky.

The truth is, when Taureans manage to operate very adequately on their own form of automatic pilot, they can switch off from the world around them very efficiently. And when they do switch off, they are actually gathering in their inner reserves to deal with the outside pressures. This sign is also very closely connected to 'feeling good'. Most Taureans like their creature comforts and hate change because it takes them out of their automatic pilot condition of separating themselves from the world around them.

Because they hate to be put in jeopardy of any kind, this is the sign that strives to create tomorrow in advance, rather than leave it to fate. In love, Taureans are regarded as extremely sensual beings. An earth sign, they deal well with the personal, physical senses and consequently all the pleasures associated with what they can see, touch, smell and taste, add up to a special delight to them. Often nature and pet lovers, Taureans are closely associated with all things off the earth and nature.

If you were born on the first or last day of a Sun sign, in astrological terms you were

born on a cusp. If that's the case, you will probably benefit from reading your own Sun sign and the Sun sign that ends or begins right before or after your date of birth. For example, if your birth date is 22 December, your Sun sign is Capricorn, but you probably have some Sagittarian traits as well

Characteristics: Gender- Feminine, Element- Earth, Gem- Diamond, Metal- Copper, Color- Pink and Blue, Planet- Venus



Gemini (Third sign - May 22 - June 21) Symbol: ♊ Means "The Twins" in Latin. Greek word is Didymoi. A constellation in the Northern Hemisphere containing the stars

Castor and Pollux (sometimes called Polydeuces).

Their mother, Leda, was seduced by Zeus, in the form of a swan, and later that night had intercourse with her husband, Tyndareus. Two pairs of twins were born as a result of these matings; Pollux and Helen by Zeus, and Castor and Clytemnestra by Tyndareus (confusing, isn't it?). So though Castor and Pollux were really half-brothers, they are called "the twins" (did I say confusing?). They were inseparable; in battle, in love, in all kind of adventures. Castor (mortal father) was killed in a fight; Pollux (immortal father) was brought up to heaven by his father Zeus. He did not want to be separated from Castor and begged Zeus to re-unite them. Zeus agreed,

and brought them together as the constellation Gemini. They have a tendency to be very changeable or at worst, unreliable. They are also associated with adaptability and speed and efficiency.

In ancient Greek mythology, Gemini's ruler - Mercury, was the light-footed messenger of the gods who darted back and forth across the heavens delivering news - which might explain why those born under the sign of the 'Twins' are always on the move; thirsty for knowledge and new experiences. Terminally curious and sometimes even mischievous, Geminis are multi-faceted souls who enjoy knowing a little bit of everything but generally not too much about one particular subject. It's just that variety is the spice of their lives!

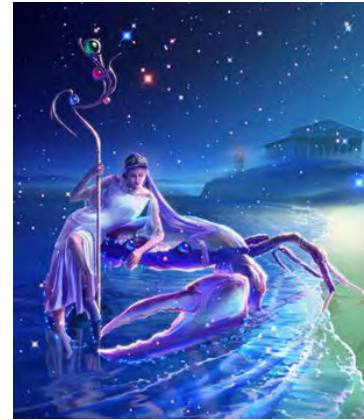
In Astrology, Geminis have also gained the reputation of being the incessant talkers of the zodiac. Those Twins that don't have the 'gift of the gab' are usually talented writers or have a special interest in foreign languages. In love, they look for a partner who can keep up with them mentally and physically! And, to quote Oscar Wilde, "there's one thing worse than people talking about you, that's people not talking about you." Whether Geminis like it or not, people are usually "talking about them". Together with Scorpio and Virgos, they are a sign that is often discussed, dissected and sometimes even put down by the other signs of the zodiac. Sometimes this is a subtle form of jealousy by others, because Geminis do lead very unique and unusual lives. The Gemini personality can appear mysterious or detached to others and therefore they are often misunderstood and unappreciated for the talents they offer to the world at large.

Another reason Geminis evoke so much interest is many born under this sign are multi-dimensionally talented. In money matters, some Geminis are very adept and quick at making it...and spending it too. Many Geminis are involved in international financial wheeling and dealing. They love the adventure and game playing involved in out-thinking other people. Gemini's can be very haphazard about their financial affairs too, with many of them ending up

in divorce courts mainly because their partners have become tired of living on the edge of a financial precipice.

If you were born on the first or last day of a Sun sign, in astrological terms you were born on a cusp. If that's the case, you will probably benefit from reading your own Sun sign and the Sun sign that ends or begins right before or after your date of birth.

Characteristics: Gender- Masculine, Element- Air, Gem- Beryl, Metal- Mercury, Color- Orange, Planet- Mercury



Cancer (Fourth sign: June 22 - July 22) Symbol: ♋ Means "The Crab" in Latin. Greek word is Karkinos. A constellation in the Northern Hemisphere near Leo and Gemini.

Supposedly the monster sent by Hera to bedevil Heracles in his second labor. That was the battle against the Hydra (one of Typhon's monster offspring) who had nine heads, each of which grew back as two when cut off. As Heracles fought the Hydra, Hera sent a giant crab as backup support for the Hydra. During the battle Heracles crushed the crab under his foot. Hera rescued it and placed it in the sky as a constellation. Beginning on the summer solstice, the Egyptians pictured it as the Scarab beetle of the sun god, Khepera. Cancers are shy and hard to get to know, protective and sometimes

oversensitive. They are often thought of as aloof and unfriendly.

Those born under the sign of Cancer, ruled by the mysterious Moon, are one of the zodiac's enigmas. It is fair to say that most Cancers are a bundle of contradictions. Compassionate and caring with friends, family and lovers, yet they can cut to the bone with their jealous remarks and ever-changing moods. Endearingly eccentric on one hand, and on the other, insecure about how others see them. Like their astrological symbol - the Crab - Cancers can appear hard and insensitive on the outside. However, for those of us who know and love a "Moon Child", we understand that deep below lies a softness and sensitivity that makes them so very special...

Just as the Moon goes through many changes as it moves from its new to full phases, Cancers too go through many new and full phases of experience. Life doesn't stand still for this sign, even if they remain in one place, because they live so much in their internal oceans of emotions. Their link with the Moon often makes it impossible for them to operate on an even keel from day to day. Up and down like the proverbial yo-yo, most Cancerians feel one way one minute, then sometimes totally different the next. But this characteristic is part of their charm.

Love and romance matter more than anything else to this sign (but this occasionally shares first place with having lots of money in the bank). No other sign romances better, equally though, no sign takes it so badly when romance turns sour either. But with their changeable natures Cancerians are fascinating, mysterious, stimulating and extremely alluring. This sign is one of the most magic of all and once their magic has reached you, they are the most beguiling companions.

If you were born on the first or last day of a Sun sign, in astrological terms you were born on a cusp. If that's the case, you will probably benefit from reading your own Sun sign and the Sun sign that ends or begins right before or after your date of birth.

Characteristics: Gender- Feminine, Element- Water, Gem- Moonstone, Metal- Silver, Color- Silver, Planet- Moon



Leo (Fifth sign: July 23 - August 22) Symbol: ♌
Means "The Lion" in Latin. Greek word is Leon.
A constellation in the Northern Hemisphere near Cancer and Virgo, containing the bright stars Regulus and Denebola.

Another of the monsters (The Nemean Lion) that Heracles had to contend with in his labors; the first of his twelve labors. In this fight Heracles discovered that the lion's skin was invulnerable, so he reverted to the technique he had discovered in his crib and choked the lion to death. He then peeled off the lion's skin (using the lion's claws to accomplish that job) and donned it as armor, thereby making himself invulnerable. Why Zeus brought this beast into the heavens as a constellation is unknown. Leos are supposed to be natural leaders with the ability to organize and dominate. They are said to

be warm and generous as associated with their sun sign and are slow to anger but become enraged if someone tries to get the better of them. Leos demand respect.

Love triumphs over all for this sign, which is ruled by the heart and operates from this dimension too. Leo's are born fortunate. Charismatic and positive-thinking they attract not only an abundance of friends and opportunities, but manage to survive life's stormy times with style and good humor.

Once a Lion is committed to a relationship, they are totally devoted and faithful. Should their heart or trust be broken they never forgive or forget. When a relationship breaks down (even a long standing one) they can disappear into the sunset without a backward look. Leos can cut ties, and leave others heartbroken, but usually there is a good reason why they have broken a tryst. For a Leo, when a relationship is over, really over, it is over for good.

There are three levels of soul-evolution of the Leos. The highest is represented by the Sphinx; wise beyond their years and great teachers to others. The second is the Lion, King of the Jungle, ruled by ego but always protective and sustaining of those they love. The last is the Lion Cub, immature and undeveloped, frightened by anything new. These Leos cling to others (in the mode of the child not wanting to leave its mother's side.) They can't bear to be alone.

No matter what level they have attained, all Leos are trend setters, leaders and adventurers. Their weakness is their pride. This is one sign where the saying "flattery will get you everything" applies, but be warned criticism will slam the relationship door right in your face.

If you were born on the first or last day of a Sun sign, in astrological terms you were born on a cusp. If that's the case, you will probably benefit from reading your own Sun sign and the Sun sign that ends or begins right before or after your date of birth.

Characteristics: Gender- Masculine, Element- Fire, Gem- Ruby, Metal- Gold, Color- Yellow and orange, Planet- Sun

Virgo (Sixth sign: August 23 - Sept 22) Symbol: ♍
Means "The Virgin" in Latin. Greek word is Parthenos.

A constellation in the region of the celestial equator between Leo and Libra.

Many candidates for whom this virgin might be. Most probable is Dike (Astraea), personification of justice, removed to the heavens by Zeus when justice on earth seemed to have been degraded beyond hope. They are said to love learning and have a capacity for communication and travel.



Virgos are often put down badly by many astrologers and written up as being fussy and narrow-minded. But when a Virgo shines, there is practically no sign to match their inner light. An in-tune Virgo is a treat to meet. When a Virgo is confident within themselves they are the most successful, structured and creative of all the signs.

Many Virgos can be found working in the "service to others" industries, ranging from welfare work, doctors, school-teachers through to practicing natural forms of healing like massage, herbal remedies etc. One of the most magical characteristics of the Virgo is no matter how many times life or romance turns sour on them, they still manage to maintain faith in others, refusing to become cynical. There is ingenuity around this sign, a kindheartedness, which unfortunately is sometimes

played upon by others for their advantage. Virgos can often become victims of relationship power-games, where they are mistreated.

Creative and sensitive, Virgos are delicate people who, like rare and special orchids, require individual treatment to fully blossom into their true unique beauty. Shy, they are happy to allow others to take center-stage and often generate their time and energy into making those they love happy or successful.

Virgos are givers and when the chips are down and you need a friend, the one available during those testing times when you need advice or companionship the most, is likely to be a Virgo. Virgos understand human frailties better than most, because they are so deep and reflective themselves. With a Virgo in your life you have someone who understands and cares and any romance or friendship based upon these qualities is certain to be mutually rewarding.

If you were born on the first or last day of a Sun sign, in astrological terms you were born on a cusp. If that's the case, you will probably benefit from reading your own Sun sign and the Sun sign that ends or begins right before or after your date of birth.

Characteristics: Gender- Feminine, Element- Earth, Gem- Agate, Metal- Nickel, Color- Green, brown, and blue, Planet- Mercury



Libra (Seventh sign: Sept 23 - Oct 23) Symbol: ♎
Means "The Balance" in Latin (hence the scales). Greek word is Zygos.

A constellation in the Southern Hemisphere near Scorpius and Virgo.

Libra people dislike conflict and are often perfectionist. They love beauty, peace and harmony.

Librans can switch off from the world around them and during these periods much more occurs on the deep innermost levels of the Libran's psyche, than their closest companions imagine. Many Librans after establishing a lifestyle that somehow falls short of their childhood dreams, manage to conjure up a most independent life and keep up an image of being dedicated to a "close relationship". They can escape into obscure role playing - and often this makes them extremely successful business people. When it comes to romance and love, Librans can be difficult to fathom yet in

business people. When it comes to romance and love, Librans can be difficult to fathom yet in

business many Librans discover they can not only be creative, but it provides an opportunity to express the more diverse sides to their personalities. Their charm can win jobs and provides powerful friends. But in both work and play, looking for peace and harmony, Librans often say “yes” when they should be saying “no”.

It is a sad fact about many a Libran's personal or business lives to say - many would have fared far better had they remained alone! But for those Librans who do find their secret dream and meet up with their Prince or Princess, that's another story! You'll find them living in some exotic, distant beautiful place, probably running the local bar or restaurant, designing the beach or ski gear, looking wonderful, sipping cocktails and finding life to be the total paradise they knew it could be. What Librans always have to remember when looking to fulfill their dreams is they should never undermine their own integrity and hold out until their dreams do come true - not simply take whatever is offered.

If you were born on the first or last day of a Sun sign, in astrological terms you were born on a cusp. If that's the case, you will probably benefit from reading your own Sun sign and the Sun sign that ends or begins right before or after your date of birth.

Characteristics: Gender- Masculine, Element- Air, Gem- Opal, Metal- Bronze, Color- Pink and blue, Planet- Venus



Scorpio (Eighth sign: Oct 24 - Nov 22) Symbol: ♏ Means “The Scorpion” in Latin. Greek word is Skorpios. A constellation (Scorpius) in the Southern Hemisphere near Libra and Sagittarius, containing the red star Antares.

Orion, the hunter, had boasted that he could kill any animal the earth produced. Artemis, who considered herself to be the greatest of hunters, was offended and sent her deadly scorpion to punish his vanity. It stung Orion to death and was thereupon raised to the heavens by Zeus, who also brought Orion into the heavens as a constellation. They are often shrewd and secretive. Scorpios are at their worst when they let their emotions get the best of them and at their best when they use their resources of strength and energy.

Reputed to be the “most powerful” sign of the zodiac,

Scorpios lead fate filled lives and have intense and dramatic personal relationships. Even as children Scorpios are often found to be wise beyond their years. Many astrologers call this the sign of the “oldest souls”. Old and wise beyond the average, Scorpios often know all the answers, except sometimes; they too often have difficulty finding what they need to develop their own happiness.

Passion, desire and power go hand in hand for Scorpios. Their biggest challenge and test in life is choosing between the power of love and the love of power. Coming to grips with their extraordinary emotional depths and sensitivity isn't easy for those around them. They are different from all other zodiac signs and this difference has them walking, working and loving to a different beat. Others can often live with a Scorpio partner for years, but not really know them. Much to do with a Scorpio remains ever secret. Their eyes often blaze with feelings that words never express, and beware on the days or nights they hide their feelings behind dark glasses, there is likely to be a storm of some kind brewing. When you deal with a Scorpio you have to always deal with them on a psychic intuitive level. They often wear a mask. Too often they say “no” when they really mean “yes”. They have contrary natures.

Once they find true love they can be the most faithful dedicated of all partners but fall out badly with a Scorpio and you are likely to find they will never forget or forgive.

Most Scorpios are winners. The main thing they have to worry about is their attitudes, which make up their mind powers and can either make or break them. When they are negative about something or someone, or critical of themselves, they can tend to get in their own way.

Scorpios operate on three levels of soul involvement; adding up to three distinctively different types of Scorpios. The first level is the Scorpion. This is the least evolved and most drawn toward using their powers the wrong way. The criminal element of Scorpio comes under this level. Then there is the eagle - the high flying, entrepreneurial, successful Scorpio, who seems able to rise above adversity and transform bad-times into good. Then the highest expression of this sign is the Phoenix Resurrected. These Scorpios are detached and extremely powerful. They are wise beyond their years and act as leaders and are an inspiration to others. Quite frequently a Scorpio goes through the three levels of involvement in one lifetime - but the levels can operate out of sequence.

Characteristics: Gender- Feminine, Element- Water, Gem- Topaz, Metal- Steel, Color- Deep red, Planet- Mars and Pluto



Sagittarius (Ninth sign: Nov 23 - Dec 21) Symbol: ♐ Means “The Archer” in Latin. Greek word is Toxotes. A constellation in the Southern Hemisphere near Scorpio and Capricorn.

Supposedly the centaur Chiron brought into the heavens as a reward for his exemplary life. The Archer has abilities in foresightedness and has a love of sports. They love freedom and independence. Thought to be very straightforward and brutally honest.

Ruled by the beneficial planet Jupiter, Sagittarians possess a natural exuberance, sense of adventure and love of life that makes them one of the most optimistic zodiac signs of all. Like their astrological symbol - the Archer - Sagittarians are renowned for aiming their sights towards whatever it is they find alluring - a love partner, dream job, vacation - and making it their own.

They believe that anything is possible - and because of this belief system, Sagittarians are adept at seeking out their very own pot of gold at the end of the rainbow.

But sometimes trying to tie down these free-spirited individuals is frustrating for those around them. Sagittarians are happiest on the move - exploring new cultures and ideas and many are attracted to occupations related to travel, the media, outdoor work and philosophical pursuits. In love, their catch-cry is “don't fence me in”. But once they find a partner who understands their need to retain their own sense of self and identity, Sagittarians can be the most big-hearted, generous and fun-loving companions of all.

Freedom loving, optimistic and honest, Sagittarians are ruled by Jupiter, the planet of abundance and higher learning. The wisdom of Jupiter imbues Sagittarians with an inherent need to develop their own unique philosophy of life. The Centaur is their astrological symbol, and it gives many insights into the Sagittarian personality. The higher-evolved Sagittarian learns to integrate the two ends of the Centaur (half-human, half-beast) in order for their arrow (another Sagittarian symbol) of higher aspirations to be more on the mark. Although they are intellectually and spiritually advanced, Sagittarians are notorious for their lack of tact.

In relationships they demand independence, but when in love, it can't be denied that they are one of the most big-hearted signs of the zodiac.

Characteristics: Gender- Masculine, Element- Fire, Gem- Turquoise, Metal- Tin, Color- Purple and deep blue, Planet- Jupiter



Capricorn (Tenth sign: Dec 22 - Jan 20) Symbol: ⏏ Means "The She-goat with Horns" in Latin (Capricornus). Greek word is Aigokeros.

A constellation in the equatorial region of the Southern Hemisphere near Aquarius and Sagittarius.

Mayhap Capricorn was Pan, who changed himself into a goat when he fled in fear from Typhon. They are said to be productive and able to set and meet goals well. They are also associated with dexterous and sure footed abilities.

The sign of the high roller, Capricorn is regarded as the zodiac's top, but also quiet, life and business achievers. But, there are two very different types of Capricorns.

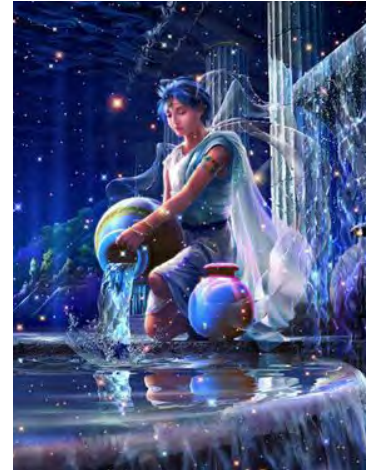
The first is represented by the mountain goat, always climbing higher and higher; never content until reaching the top. The second is the garden goat, with little adventurous spirit or ambition-happy to remain within a small domain, refusing to budge unless it is pushed. Either type of Capricorn, however, is patient and persevering. They reach their goals because they know the longest journey commences with a single step and that the first step is always the most difficult.

The one thing a Capricorn must always try to do is balance work with play; otherwise they can become too one-sided and work can replace true personal emotional fulfillment. Continually climbing the eternal mountain of success, Capricornians rise to the occasion when faced with a new task or deadline. Even if something comes to a grinding halt, their ambition to reach the ultimate keeps them moving forever onwards and upwards (prompted by the strict influence of ruling planet Saturn). Although conservative and cautious, Goats are willing to try unusual approaches on their road to success in business or in love. Romantically, they desire a permanent relationship with someone who'll give them the affection they crave (and often neglect to give themselves!)

The rulership of Saturn - the planet representing responsibility, structure and hard work - ensures that Capricorns in their truest of expression, are ambitious, practical and superb organizers. Although many Capricorns are borderline workaholics, this doesn't necessarily make them dull or gloomy! They have an offbeat sense of humor, which seems to erupt at the most unexpected moments. Their motivating force in life is success, money, status, authority and - although many might not admit it - love. By nature Capricorns are cautious when entering a new love relationship, but once they feel 'safe' with their partner, the cool exterior melts away to reveal a sensitive and loyal heart beneath. As a friend, Capricorns can be relied upon to provide the strongest and most sympathetic pair of shoulders in the zodiac...

If you were born on the first or last day of a Sun sign, in astrological terms you were born on a cusp. If that's the case, you will probably benefit from reading your own Sun sign and the Sun sign that ends or begins right before or after your date of birth.

Characteristics: Gender- Feminine, Element- Earth, Gem- Garnet, Metal- Lead, Color- Brown, Planet- Saturn



Aquarius (Eleventh sign: Jan 21 - Feb 19) Symbol: ♒ Means "The Water Bearer" in Latin. Greek word is Hydrochoös.

A constellation in the equatorial region of the Southern Hemisphere near Pisces and Aquila.

Aquarians are associated with truth and life force. They are the humanitarian symbol, modeled after the Greek man, Ganymede, the cup bearer of the gods.

Those born under the sign of Aquarius not only march to a different drummer, they make up new music as they go along. They are 'mind oriented' individuals, whose thoughts never stop tick-tocking over. Because of their high focus on intellectual exploration, many inventors, eccentrics and highly original trailblazers are born under this sign. Their intense ability to live on many mental levels, holds both pain and pleasure for Aquarians. For example, in the American Hall of Fame

there are more Aquarians than any other sign, yet statistics reveal that in mental institutions there are more Aquarians than any other sign too. Many extremes can surround this sign and these extremes can take them to both heaven and hell.

But in everyday terms, most Aquarians are extremely humanitarian and often involved in social programs that assist others. They can also be objective in judgment, for they never let their emotions get in the way. Outgoing and amiable, Aquarians attract friends wherever they go and those whom Aquarians befriend have their unswerving loyalty.

Aquarians are the zodiac's most mysterious and unusual people - and no two are anything alike. Those born under this sign - ruled by innovative and non-conformist Uranus - march to the beat of their own drum. They see life in a different way. Others quite frequently think their habits and ideas are eccentric or crazy in some way, but it is this uniqueness that makes them so special. The Aquarian mind is extremely quick and they never seem to stop thinking (it is interesting to note that many born under this sign suffer from insomnia.) Aquarians usually have strong political, environmental or social beliefs. But whether it is a relationship, career or cause - Aquarians are happiest when they have "something" to believe in and nurture.

Characteristics: Type- Masculine, Element- Air, Gem- Amethyst, Metal- Aluminum, Color- Blue, Planet- Uranus

Pisces (Twelfth sign: Feb 20 - March 20) Symbol: ♓ Means "The Fishes" in Latin. Greek word is Ichtyes.

A constellation in the equatorial region of the Northern Hemisphere near Aries and Pegasus.

They are said to be interested in unity and what lies beneath the surface. Thus they may be drawn to the mystic or occult. Often they can put their psychic intuition to good use.

Mysterious and alluring individuals, most Pisces are extremely talented, but even though they are gifted in many ways, they still manage to spend most of their lives battling "confusing" conditions. Pisces is the sign symbolized by the image of two fish. Their symbol depicts one fish heading upward, the other pulling downward. This mirrors how Pisceans are frequently torn between two pathways in life, or actually do live two very different existences at the same time.

The number 2, is a very powerful number for them. This zodiac sign is acknowledged as being the Saint and the Sinner rolled into one; the trend setter of fashion or art, the



lost soul, the philosopher and the psychotic and the visionary. As a credit to them, considering their many vulnerable characteristics; Pisceans are incredibly adaptable and resilient. They are to be found leading the field in many diverse areas of life and many Pisces can be found represented amongst top business millionaires. On the other side of the coin, prisons, reform schools and all kinds of institutions statistically hold a high number of Pisceans too.

The Piscean's inner quest to explore their "ivory tower" syndrome can lead them into some most unusual and unlikely living conditions. Of all the signs of the zodiac, Pisces are the ones who end up in the most muddles over the years of their lives. They fantasize about situations, people and particularly romance - and because they spend so much time in their own form of 'fantasy

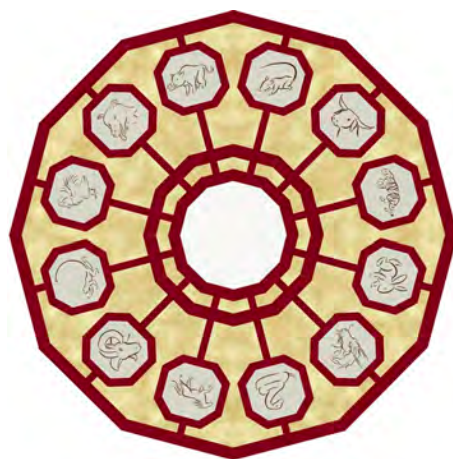
land' this can catch them short in other more worldly areas. Because of this inner world of fantasy, Pisces people seldom perceive whatever is going on around them in its true light. They see life instead as they want to see it, coloring their view of the world in hues and tones far removed from its true reflection. No wonder this is the sign of both miracles and disillusionment. If you are a Pisces, be warned your emotions are a weak spot.

One thing that plays havoc with your life is romance. When things romantically are going well for you, you're on cloud nine. When romance turns sour you land in a heap. Pisces often need to take lots of holidays (or time off) to recover from life's many diverse pressures. You are the zodiac's most sensitive sign, so you need to take extra special care of yourself. Nobody can beat you up, as much as you can beat yourself up within your own mind. In your purest form you are psychic, visionary and a guiding light to all who know you. But, in your "out of tune" state, you become depressed, obsessive and confused.

Characteristics: Gender- Feminine, Element- Water, Gem- Aquamarine, Metal- Platinum, Color- Sea-green, Planet- Neptune and Jupiter

Chinese Zodiac Signs: Eastern Tradition

The ancient Chinese people developed a sophisticated science of astrology that continues to have profound influence in China today. Rooted in the fundamentals of Taoism, it evolved into a system vastly different from Western astrology. Rather than determining personality by the time of year in which you were born, in Taoist astrology it is the year itself that determines your character. The years form a twelve-year cycle of signs, each named after an animal. Additionally, your personality depends on which of the five traditional Taoist elements you were born under - fire, earth, metal, water, or wood. This makes for a cycle of sixty unique signs. You can find here information for each sign's personality, compatibility, child-parent relations, and rising and falling fortunes during the twelve-year cycle.



It's interesting to think about why Chinese astrologers have used these particular animal names. Unfortunately, Chinese astrology is so old that we just don't have any ancient texts describing the process. Most likely it was done empirically, that is, astrologers looked at human behavior, came up with twelve types (to match their 12 year calendar cycle) and thought about which animal best exemplified each. Chinese animal stereotypes sometimes approximate Western, e.g., the loyal Dog. For the Chinese, however, Rat and Snake do not have the negative connotations characteristic of Western perceptions. In fact, they are two of the most prestigious signs.

Already it can be seen there are both similarities (both have 12 basic signs) and differences (solar and lunar calendar) between Chinese and Western astrology. It is important to understand them to avoid confusion.

In the United States, the years are dated from the birth of Jesus Christ, for example, 1977 means 1,977 years after the birth of Christ. This represents a linear perception of time, with time proceeding in a straight line from the past to the present and the future. In traditional China, dating methods were cyclical, meaning something that is repeated time after time according to a pattern. A popular folk method which reflected this cyclical method of recording years are the Twelve Animal Signs. Every year is assigned an animal name or "sign" according to a repeating cycle: Rat, Ox, Tiger, Rabbit, Dragon, Snake, Horse, Sheep, Monkey, Rooster, Dog, and Boar. Therefore, every twelve years the same animal name or "sign" would reappear.

A cultural sidelight of the animal signs in Chinese folklore is that horoscopes have developed around the animal signs, much like monthly horoscopes in the West have been developed for the different moon signs, Pisces, Aries, etc. For example, a Chinese horoscope may predict that a person born in the Year of the Horse would be, "cheerful, popular, and loves to compliment others". These horoscopes are amusing, but not regarded seriously by the Chinese people.

The animal signs also serve a useful social function for finding out people's ages. Instead of asking directly how old a person is, people often ask what is his or her animal sign. This would place that person's age within a cycle of 12 years, and with a bit of common sense, we can deduce the exact age. More often, though, people ask for animal signs not to compute a person's exact numerical age, but to simply know who is older among friends and acquaintances.

The Legend: According to Chinese legend, the twelve animals quarreled one day as to who was to head the cycle of years. The gods were asked to decide and they held a contest: whoever was to reach the opposite bank of the river would be first, and the rest of the animals would receive their years according to their finish. All the twelve animals gathered at the river bank and jumped in. Unknown to the ox, the rat had jumped upon his back. As the ox was about to jump ashore, the rat jumped off the ox's back, and won the race. The pig, who was very lazy, ended up last. That is why the rat is the first year of the animal cycle, the ox second, and the pig last.

The rotating cycle of twelve animal signs was a folk method for naming the years in traditional China. The animal signs are repeated every twelve years. 1976 was the Year of the Dragon, and 1977 was the year of the Snake, etc.

Modern Astrology Symbols: Eastern Tradition

The Rat (1936, 1948, 1960, 1972, 1984, 1996, 2008 and etc.) Ambitious and sincere. Compatible with the Dragon and Monkey; opposite is the horse. The Rat is hard working and thrifty, ambitious and material. They conceal their emotions but sometimes fall deeply



in love. Metal Rats are dominating and emotional, Water Rats tend to be intellectuals; Wood Rats are unconventional and Fire Rats are independent and enthusiastic while Earth Rats are stable.

The Ox (1937, 1949, 1961, 1973, 1985, 1997, 2009 and etc.)

A leader and bright and cheerful. Compatible with the Snake and Cock. Opposite is the Sheep. Oxen are even more hard working than the rat. They are stubborn and intelligent. Ox passions are easily aroused and some Oxen can be deeply introverted. Metal Ox are both artistic and argumentative; Water Oxen are intensely rational, Wood Oxen share their feelings of others; Fire Oxen are stolid and stubborn and Earth Oxen are even more stolid and stubborn



The Tiger (1938, 1950, 1962, 1974, 1986, 1998, 2010 and etc.)

Fortright and sensitive you possess great courage. Compatible with the Horse and Dog. Dislikes the Monkey. You were born lucky and you need that luck because you often take undue risks. Tigers are sensual, restless and unpredictable. Metal Tigers are extroverts; Water Tigers are usually placid but sometimes explode into rage; Wood Tigers are agreeable and Fire Tigers are dominating while Earth Tigers are practical.



The Rabbit (1939, 1951, 1963, 1975, 1987, 1999, 2011 and etc.)

Talented and affectionate you seek tranquility. Compatible with the Sheep and Boar and has trouble with the Cock. Rabbits are Luckier than tigers and are generous, thoughtful and artistic but are inclined to be moody. Metal Rabbits are emotional and devious; Water Rabbits are shy, Wood Rabbits are sometimes overly generous; Fire Rabbits are commanding while Earth Rabbits are intellectual.



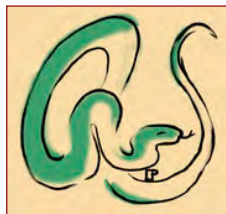
The Dragon (1940, 1952, 1964, 1976, 1988, 2000 and etc.)

Robust and passionate, your life is filled with complexity and mystery. Compatible with the Monkey and your opposite is the Dog. All dragons are energetic, strong willed and have fiery tempers. Their personalities tend to make them successful. They usually remain single or marry young. Metal Dragons are the toughest of the tough, Water Dragons are more easy to compromise with; Wood Dragons are creative; Fire Dragons are very energetic and Earth Dragons are the most stable.



The Snake (1941, 1953, 1965, 1977, 1989, 2001 and etc.)

Strong Willed and intense you display great wisdom. Compatible with the Cock and Ox; your opposite is the Boar. Snakes tend to be secretive and self-reliant. They are pleasure loving and sometimes promiscuous. Water Snakes are artistic and practical; Metal Snakes are logical; Wood Snakes are kind; Fire Snakes are concerned with power and money while Earth Snakes are cautious.



The Horse (1942, 1954, 1966, 1978, 1990, 2002 and etc.)

Physically attractive and popular you like the company of others. Compatible with the Tiger

and Dog; your opposite is the Rat. Horses are liked by most people, they are freedom loving and normally cheerful. Metal Horses are adventurous and egotistic; Water Horses are witty, Wood Horses are unpredictable, Fire Horses are intelligent and bad tempered while Earth Horses are the least temperamental.



The Sheep or Goat (1943, 1955, 1967, 1979, 1991, 2003 and etc.)

Aesthetic and stylish you enjoy being a private person. Compatible with the boar and Rabbit, while incompatible with the Ox. Sheep are gentle, considerate and sympathetic. They get their feelings hurt often. Metal Sheep are a little stronger than the others, Water Sheep are more outgoing, Fire Sheep are more combative and Earth Sheep are very hard workers.



The Monkey (1944, 1956, 1968, 1980, 1992, 2004 and etc.)

Persuasive and intelligent you strive to excel. Compatible with the Dragon and Rat; your opposite is the Tiger. The Monkey is often conceited, but their outstanding charm usually makes up for this. They are extremely resourceful and are sometimes deceitful. They tend towards promiscuity but eventually settle down. Metal Monkeys are the fiercest; Water Monkeys are sensitive; Wood Monkeys are talkative and Fire Monkeys are often foolish while Earth Monkeys are meditative.



The Rooster (1945, 1957, 1969, 1981, 1993, 2005 and etc.)

Seeking wisdom and truth you have a pioneering spirit. Compatible with the Snake and Ox and opposite the Rabbit. Cocks are witty to the point of being sarcastic and are often braggarts and tactless in their dealings with others.



The Dog (1946, 1958, 1970, 1982, 1994, 2006 and etc.)

Generous and loyal and has the ability to work well with others. The horse and Tiger are your friends and the Dragon your opposite. You are Good to the people around you and often become an over worker. Dogs are very emotionally stable.



The Boar (1947, 1959, 1971, 1983, 1995, 2007 and etc.)

Gallant and noble your friends will remain. Compatible with the Rabbit and Sheep. Opposite is the Snake. The Boar is full of charisma and generates many friendships but they can be fleeting and never have a settled life.



Druidic Astrology

Celtic Lunar Astrology is essentially a Druid Zodiac. The Druids were a sect of Celtic priests who inhabited the British Isles around 1000 B.C. The Druids used a lunar calendar consisting of 13 months, each being 28 days long, plus one intercalary day. The Druid religion was based mainly upon an awareness of natural and supernatural energies. These energies were identified with spirits or dryads who dwelt within the ancient trees. The Celts envisioned the entire Universe in the form of a tree, whose roots grew deep into the ground and whose branches reached high into the Heavens. In time, the Celtic people eventually designated a tree to each Moon Phase in their calendar in accordance with its magical properties. Therefore, the Celtic Zodiac is based upon the cycle of the Moon, with the year divided into the 13 lunar months established by the Druid religion.



The Birch: December 24 - January 20

To the Druids, the Birch represented renewal and rebirth, since it was the first tree to come into leaf after the Winter Season. This tree is hardier than even the mighty Oak and will thrive in places where the Oak will fail to flourish. It also signifies cleanliness and purity.

Birch individuals are determined, resilient and ambitious. Being goal-oriented, they make for excellent leaders, good organizers and supreme strategists. Usually undeterred by setbacks and possessed of an intense need to succeed, Birch individuals believe that hard work, patience and persistence will eventually triumph.

Birch people are loyal, reliable and trustworthy, but prone to be reserved in displays of affection...although they are sociable with those they choose to socialize with. Personal limitations are not readily accepted by Birch individuals and due to their drive and ambition, there is sometimes a tendency to grow cynical. These people thrive best under a well-regimented lifestyle and are often known as the "workaholics" of society. Serious by nature with a somewhat droll sense of humor, Birch individuals sometimes aim to become less serious, which can lead to identity problems. There is a tendency for Birch people to become obsessive about health, but they are unlikely to be affected physically or mentally, having developed a powerful resistance.

They prefer to keep a low profile, even in high office, preferring not to flaunt their successes, and have an acute sense of money...having worked hard to acquire their financial status. On the more negative side, Birch individuals can have a pessimistic attitude at times and may impose upon themselves a large amount of self-discipline.

There is a tendency for the Birch individual to experience loneliness and successful marriages frequently occur later in life, since it is often difficult for such people to easily find someone willing to fit into their strict routine. Divorce is rare for those governed by the Birch...separations being more likely or the premature death of spouses. Birch people need a goal in life in order to avoid becoming depressed and pessimistic. They possess much individual potential but must cultivate great persistence in order to overcome personal setbacks.

Birch New Moon / Full Moon

There are two distinct types of Birch individuals. The "new moon" character is associated with the first two weeks of a sign and the "full moon" character is associated with the last two weeks.

The "new moon" Birch individual has a more impulsive and emotional nature. Is inclined to be subjective and/or introverted. The positive traits of these people are displayed by their resolve or faith in themselves in overcoming all obstacles, thereby being more tenacious in pursuing their objectives in life.

The "full moon" Birch individual possesses a clarity of purpose combined with a visionary nature. Such people are inclined to be more objective and/or extroverted. The characteristic negative traits, however, hinge upon a lack of reality which can sometimes cloud the judgment.

Birch Secondary Trees

December 24 to December 31 - Your Secondary Tree is: the Apple, whose motto is "Fulfilled In Love." The Apple Tree is the tree of perfection, the love link that unites nature with mankind, life with death and the beyond with the here and now. It is one of the seven sacred Celtic trees. The Celtic calendar has only two fruit trees...one is the Apple and the other is the Fig. Apple individuals are usually slight of build and blessed with an abundance of charm, appeal and attraction. They exude a pleasant aura and are flirtatious, adventurous and sensitive. Always in love, Apple people seek to be loved and make for faithful and tender partners. They are generous, stable and possessed with scientific talents. A person who "lives for today," the Apple individual is a carefree philosopher endowed with imagination who dreams about an untroubled life with no division. Apples are excellent mediators, their moral tolerance being beyond reproach and they like to be in contact with people they can help, for by helping others, they can often help themselves out of a bad patch.

January 1 to January 11 - Your Secondary Tree is: the Fir, whose motto is "To Watch Over Every Birth" or "The Mysterious." Fir individuals have extraordinary taste, dignity and sophistication. They love anything that is beautiful, but tend to be somewhat moody and stubborn. Though somewhat egotistic, Fir individuals nonetheless care deeply for those close to them. They are usually quite modest, very ambitious, talented and industrious. Fir people tend to make many friends...and equally as many foes...but are very reliable in character. Reserved about everything that affects them closely, Fir individuals tend to take refuge beneath the facade of prosperity, with a paradoxical need to feel free and protected at the same time.

January 12 to January 20 - Your Secondary Tree is: the Elm, whose motto is "Noble Attitude." Elm individuals are usually pleasantly built and are fond of tasteful clothes. Their demands are modest and they are practical by nature. There is a tendency to be unforgiving of those who make mistakes, but they are otherwise cheerful. With a desire to lead, the unconventional Elm individual dislikes being given orders, but does make for an honest and faithful partner. With an inherent dislike of selfish people and those who "follow the pack," the ideals of Elm people lean strongly toward justice and tolerance. Although Elm individuals are prone to make decisions on behalf of others, they are nonetheless noble-minded and generous with a good sense of humor. Those who fall under the jurisdiction of the Elm detest being labeled...even if that label be a flattering one.

Birch Deity

The Birch deity is Lugh, also known as the "Shining One." Lugh was a Hero God whose symbol in Wales was a White Stag and whose sacred symbol was a spear.

Always accompanied by two Ravens, Lugh is sometimes depicted as having only one eye. He was a deity of many skills, a diverse God whose jurisdiction included the Sun, light,

grain harvest, fire, metallurgy and weaving. He was also known to be a protector of the weak. Lugh, whose destiny it was to kill his grandfather, was Chief Lord of the Tuatha De Danaan and may have originally been a King of the Fomorians who was adopted by the Tuatha De Danaan and then by the Celts. Though divine, Lugh is thought to have possibly been sired by an earthly father and, because of this association, is perceived as a "bridge" between the mortal and immortal worlds. More statues and holy sites were erected to Lugh than to any other Celtic deity and he is often equated with the Greek God, Apollo. Lugh's final claim to fame is that his name became part of the term used to describe a certain fairy common in Irish folklore...over time, "Little Stopping Lugh" or "Luchorpain," evolved into the word "Leprechaun," the tiny expert cobbler and guardian of hidden treasure.



The Rowan: January 21 - February 17

Rowan trees were planted near doors and gates to ward off evil influences and branches were attached to barns in order that the cattle housed inside would be protected from misfortune. This tree was also believed to guard the gateway to the spirit world and its boughs often used for dowsing and deflecting spells. The Rowan is sometimes called the "Whispering Tree" and ancient legend tells that it has secrets to reveal to those who would but listen.

Rowan individuals are basically idealistic and progressive thinkers possessed of visionary minds, coupled with strong humanitarian and spiritual principles. They thrive on change, becoming impatient with convention or restriction. Artistic, original and unconventional, Rowan people can appear to others as detached and aloof for they are self-contained individuals and their vision is not necessarily always shared by the rest of humanity. Their cool temperament disguises many passionate beliefs and the need is always present for these individuals to argue their case against bigotry and ignorance.

If Rowans are unable to find an outlet for their powerful imagination, they easily become restless and quarrelsome. Being true individuals who hate conformity, Rowans are natural born leaders but, because they often adopt unpopular causes, sometimes have very few followers. They are kind and thoughtful people but have problems in following others, which can lead to serious authority issues.

Rowan people make for excellent listeners and are very respectful of others' opinions. Since they are somewhat unconventional characters in their approach to life, however, they have a tendency to be a little tactless and may alienate people. Rowans are also liable to antagonize through debate and escalate a situation out of proportion. In terms of a career, the Rowan individual is naturally drawn toward modern technology and possesses an overwhelming desire to reorganize and improve on anything which might be outdated.

Rowans are sympathetic bosses but would rather not take on responsibility for others. They frequently have diverse interests and tend to tinker with everything since they are extremely inventive people. The Rowan's sense of humor leans a little toward the odd side, with a propensity to laugh at serious issues...a trait that tends to reinforce their inherent knack for alienation.

The unpredictable aspect of Rowans is a weak point in terms of relationships and they tend to be somewhat unromantic by nature. They usually marry later in life because they are reluctant to lightly make such a commitment and also reluctant to relinquish personal freedom...it is not easy to find a partner who will understand this. Rowans can, however, enjoy extremely successful marriages if the chosen partner shares the same way of thinking. They are supportive parents, but will expect a great deal of independence from their children.

Rowan New Moon / Full Moon

There are two distinct types of Rowan individuals. The "new moon" character is associated with the first two weeks of a sign and the "full moon" character is associated with the last two weeks.

The "new moon" Rowan individual tends to become impatient and frustrated in the struggle toward a greater awareness. Although such Rowans may never be quite reticent on a personal level, they will nonetheless help to pioneer great social changes with reforming zeal.

The "full moon" Rowan individuals are less reticent all around, but are inclined to promise more than they are able to deliver. However, this will not negate their powerful influence and inspiration, and their response to every situation is primarily directed toward asserting the rights of the individual.

Rowan Secondary Trees

January 21 to January 24 - Your Secondary Tree is the Elm, whose motto is "Noble Attitude." Elm individuals are usually pleasantly built and are fond of tasteful clothes. Their demands are modest and they are practical by nature. There is a tendency to be unforgiving of those who make mistakes, but they are otherwise cheerful. With a desire to lead, the unconventional Elm individual dislikes being given orders, but does make for an honest and faithful partner. With an inherent dislike of selfish people and those who "follow the pack," the ideals of Elm people lean strongly toward justice and tolerance. Although Elm individuals are prone to make decisions on behalf of others, they are nonetheless noble-minded and generous with a good sense of humor. Those who fall under the jurisdiction of the Elm detest being labeled... even if that label be a flattering one.

January 25 to February 3 - Your Secondary Tree is the Cypress, whose motto is "Song of Resurrection" or "The Faithfulness." Cypress individuals are strong, muscular and adaptable, taking what life has to offer. Content and optimistic, Cypress people crave money and acknowledgment and hate to be lonely, although they are prone to pursue independence. They are passionate individuals, with a love which is difficult to satisfy, but are nonetheless faithful. Cypress individuals have a tendency to be quick-tempered, unruly, pedantic and careless. They often possess a biting irony and a certain taste for sarcasm, acquired by virtue of their tendency to bravely undergo the hardest of blows and thereby learn how to free themselves from the burdens of life.

February 4 to February 8 - Your Secondary Tree is the Poplar, whose motto is "Overcome Doubt" or "The Uncertainty." Poplar individuals have a decorative appearance but tend lack self-confidence. They are prone to mature very quickly and assimilate things equally as quickly. Displaying courage only when absolutely necessary and hostile only toward extremists, the narrow-minded or hotheads, Poplar people prefer the goodwill of others and pleasant surroundings. This individual can be somewhat choosy, is often lonely and may harbor great animosity toward others. Artistic by nature, they are good organizers who lean toward philosophy. Reliable in almost any given situation, Poplar people cherish their friends and surround them with love. They take partnerships very seriously but are inclined to be generous only toward those who are generous in return. The life of a Poplar individual is made of judicious transactions and all manner of exchanges. If the Poplar perceives a warm and friendly atmosphere, then the heart and spirit opens...if not, then he or she will withdraw.

February 9 to February 17 - Your Secondary Tree is: the Cedar, whose motto is "Moral Greatness" or "The Confidence." Cedar individuals are often possessed of rare beauty. They

know how to adapt, have a love of luxury and are usually blessed with good health. Not in the least shy, Cedar people are prone to sometimes look down on others, they themselves brimming with self-confidence. Determined and often impatient, Cedar individuals like to impress. They have many talents, are industrious and possess a healthy optimism and inner strength. Alert and usually thoughtful, the Cedar lives in enlightenment, responding to precise self-imposed requirements. Neither success nor failure can erode the serenity or the determination of a Cedar individual. Otherwise able to make quick decisions, Cedar people seem to constantly be waiting for their one true love.

Rowan Deity

The Rowan deity is Brigid, Celtic Goddess of Fertility and Poetry. Also known as "Brid" (among many other aliases), Brigid's name comes from the old Irish word "brigh," which means "power" or "renown." Daughter of the Dagda, Brigid was a major Celtic pastoral deity and one of the great Mother Goddesses of Ireland. Her priestesses numbered nineteen, representing the nineteen-year cycle of the "Celtic Great Year". As a Goddess, Brigid presided over many things: fire, fertility, the hearth, all feminine arts and crafts, as well as healing, agriculture, learning, poetry, love, witchcraft and occult knowledge, to name but a few. Brigid became Christianized as Saint Brigid of Kildare, who is said to have lived from 450 AD to 523 AD, founding the first female Christian monastery community in Ireland. In Irish mythology, Brigid is regarded as midwife to the Virgin Mary, and has also been worshiped as a guardian of children and slayer of serpents. As Saint Brigid or Saint Bride, she is one of Ireland's Patron Saints.



The Ash: February 18 - March 17

The Ash was a sacred chieftain tree, believed to "court the flash" since it was prone to be struck by lightning. The wood of the Ash was thought to be enchanted and was used by the Druids to fashion wands and spears. Its twigs were placed in circles as a protection from snakes, while witches would use the timber as handles for their broomsticks. Children would be passed through the branches of an Ash in order that they might be protected and to cure them from illness. Ash leaves were placed under pillows to induce prophetic dreams or placed in bowls of water to ward off ailments.

Ash individuals tend to have duality in their natures. On one side, they are artistic with an aura of vulnerability...on the other side, they are quite pragmatic. Being compassionate and sensitive, they understand the baser elements of humankind, as well as the spiritual aspect. The compassion of Ash individuals also extends to the animal kingdom and they have an innate ability to relieve suffering, both by physical nursing and the power of prayer.

The faith of the Ash is rarely orthodox in a religious sense, but they are highly intuitive individuals, often possessing a strong deeper sense of spiritual matters. Ash people are highly adaptable and, despite a frail appearance, can recover from almost any emotional blow.

On the negative side, those governed by the Ash frequently experience trouble when handling the more mundane practicalities of everyday living. Often easily influenced by others, the Ash individual can be low on self-confidence and may become isolated.

Ash people have a creative genius for making money but frequently fail to carry a project or idea through to its completion. As children, they require careful direction in order to learn how to use their talents to the fullest potential. Possessed of a somewhat mystical quality, Ash individuals are drawn to fantasy worlds. They adore the theater and movies, frequently blessed with beautiful singing voices although their preference is to work behind the scenes.

They are also usually attracted to the ocean...or any other body of water...sometimes

with fascination and sometimes with fear. There is no compromise for the vulnerable Ash individual where water is concerned...it will be one or the other.

The career of the Ash person should never involve a routine which is too strict. The arts are a good choice but, because of the compassionate nature of these individuals, they are often drawn to the medical field and are good at organizing charitable functions.

Ash New Moon / Full Moon

There are two distinct types of Ash individuals. The "new moon" character is associated with the first two weeks of a sign and the "full moon" character is associated with the last two weeks.

The "new moon" Ash individual tends to be more impulsive and demonstrative when it comes to emotional relationships. Although he or she may appear apprehensive, hiding beneath the surface is an immensely spontaneous person.

The "full moon" Ash individual tend to be a natural exhibitionist who responds to situations with great generosity of spirit. This may be considered by some as a certain gullibility or naivety, but this apparent weakness is just that...merely apparent. In truth, it is the outward display of a humble spirit...a rare and much-coveted quality.

Ash Secondary Trees

February 18 - Your Secondary Tree is: the Cedar, whose motto is "Moral Greatness" or "The Confidence." Cedar individuals are often possessed of rare beauty. They know how to adapt, have a love of luxury and are usually blessed with good health. Not in the least shy, Cedar people are prone to sometimes look down on others, they themselves brimming with self-confidence. Determined and often impatient, Cedar individuals like to impress. They have many talents, are industrious and possess a healthy optimism and inner strength. Alert and usually thoughtful, the Cedar lives in enlightenment, responding to precise self-imposed requirements. Neither success nor failure can erode the serenity or the determination of a Cedar individual. Otherwise able to make quick decisions, Cedar people seem to constantly be waiting for their one true love.

February 19 to February 29 - Your Secondary Tree is: the Pine, whose motto is "Father of Wisdom" or "The Particular." Pine individuals are very robust and active, and also tend to be cautious, provident and hard-working people. They are idealists, being trustworthy and practical by nature. They love agreeable company and know how to make life comfortable without being selfish...if Pine individuals have a benefit, it will almost always reflect on those around them. They make for good companions, though not always overly-friendly to those they do not know. Pine people fall in love easily, but with a passion which is prone to burn out quickly. They have a tendency to give up without much struggle and may suffer many disappointments in life.

March 1 to March 10 - Your Secondary Tree is: the Weeping Willow, whose motto is "Nothing Unknown" or "The Melancholy." Willow individuals are extraordinarily attractive and very empathetic...but filled with melancholy. They adore anything beautiful and tasteful and possess an inherent desire to travel. Both psychologically and intellectually, Willows are flexible and adaptable, blessed with a tolerance which allows them to identify with the most diverse of people. Practical-minded, Willow individuals are able to remain calm during "hustle and bustle." Being restless and capricious dreamers, Willow people are not always easy to live with, often demanding by nature. Honest with good intuition, Willows nonetheless frequently suffer greatly in matters of the heart before they find an anchoring partner.

March 11 to March 17 - Your Secondary Tree is: the Lime (whose motto is "The Doubt") or the Linden (whose motto is "Protector of the Oak Trees")...dependent upon the source. Lime individuals are said to be inclined to accept in a composed fashion whatever life hands to them. They detest fighting, stress, laziness and idleness. Limes are relenting people who will often make sacrifices for their friends. They possess many talents but lack the tenacity to make those talents blossom. Lime people can be somewhat jealous and complaining by nature, but are very loyal individuals. Linden individuals are said to love life. No matter how much such people may try to convince themselves that everything is perfect, they cannot help but wonder why their ideas and dreams are more beautiful than reality. Extremely imaginative, Linden people tend to look at the world through "rose-colored glasses." This is an ideal that they are often able to convey to those around them who may then also view life in a more beautiful manner.

Ash Deity

The Ash deity is Gwyddion, son of the Goddess Don. In Welsh Mythology, the Children of Don were the deities who represented the Sky and the people of Cymru referred to the Milky Way as the "Castle of Gwyddion." Magician, storyteller and trickster, Gwyddion was very wise, particularly in music magic, and once rescued Llew (his nephew) by singing an enchantment.

Often referred to as a "Master of Illusion," Gwyddion was a helper of humankind and a warrior against the greedy and small-minded. He supported the cultural arts and learning, and attempted to stamp-out ignorance. For these endeavors, Gwyddion is sometimes called the "Druid of the Gods".

Gwyddion and his brothers fought in the Battle of the Trees to ensure that the Dog, Deer and Lapwing which Gwyddion had taken from Annwn could remain on Earth. His last foray into the Otherworld resulted in Pigs (sacred to many Goddesses) being brought to humankind.



The Alder: March 18 - April 14

The Alder was believed by the Druids to link both male and female principles, thus helping to create a balance between the two within each individual. It is also associated with courage and represents the evolving spirit. Resistant to the rotting element of water, wood from the Alder was often used in the making of bridges, boats, clogs and milk jugs. It was also frequently used in the making of magical whistles, flutes and pipes.

Alder individuals are powerful, adventurous people prepared to make their own way in the world, often leaving friends and family behind. They possess a great deal of courage and make for wonderful allies, but usually prefer to fight their own battles. They have a restless spirit and, on occasion, can be foolhardy in pursuits due to their sense of adventure. Since they are also very competitive by nature, they are likely to do everything to the limit of their being, but often direct their energies entirely for the good of others...frequently to their own detriment.

Alder people are inclined to break down barriers and explore new territory. Their enthusiasm and bravery makes them excellent leaders. They can, however, be selfish and display a quick temper which may earn them enemies. The Alder individual has a well-honed sense of humor (sometimes considered to be barbed or even satirical) and will often "play the clown" when in the midst of a group. Being extremely physical people, Alders are full of energy and have a deep-seated need to be active almost 24 hours a day.

Impetuous and self-reliant, Alders enjoy risk-taking and are tenacious workers. Being affectionate, gentle, charming and usually accommodating, they inspire great loyalty in others.

Magnificent as entrepreneurs, Alder individuals are often flamboyant and frequently attracted to dangerous occupations. In friendship, their personal ego rides high but they possess a need for recognition which often makes them vulnerable.

They are great competitors but, if on the losing end, have the tendency to quit and try something new instead. If an Alder can be convinced to channel his or her energy into humanitarian causes, then he or she will be the type of person who is not easy to forget. Psychologically, the Alder is uncomplicated and will usually express any opinion quite openly.

With a passionate nature and an inherent desire for love, they are apt to marry quickly but usually make better sweethearts than they do spouses, given their need for personal freedom. As parents, however, they rank among the best that can be found.

Alder New Moon / Full Moon

There are two distinct types of Alder individuals. The "new moon" character is associated with the first two weeks of a sign and the "full moon" character is associated with the last two weeks.

The "new moon" Alder individual is perhaps the most restless and indecisive. While personal courage and sincerity may never be in doubt, such an individual might be well-advised to slow down every now and again in order to reconsider the consequences of any actions.

The "full moon" Alder individual is the most persuasive, exuding a more confident approach to life in general, but can lack the apparent vibrant energy associated with the "new moon" Alder. Nevertheless, such individuals can become extremely successful by being strategically placed in the right position to take full advantage of any crisis situation.

Alder Secondary Trees

March 18 to March 20 - Your Secondary Tree is: the Lime (whose motto is "The Doubt") or the Linden (whose motto is "Protector of the Oak Trees")...dependent upon the source. Lime individuals are said to be inclined to accept in a composed fashion whatever life hands to them. They detest fighting, stress, laziness and idleness. Limes are relenting people who will often make sacrifices for their friends. They possess many talents but lack the tenacity to make those talents blossom. Lime people can be somewhat jealous and complaining by nature, but are very loyal individuals. Linden individuals are said to love life. No matter how much such people may try to convince themselves that everything is perfect, they cannot help but wonder why their ideas and dreams are more beautiful than reality. Extremely imaginative, Linden people tend to look at the world through "rose-colored glasses." This is an ideal that they are often able to convey to those around them who may then also view life in a more beautiful manner.

March 21 - Your Secondary Tree is: the Oak, whose motto is "Symbol of Vital Strength" or "The Brave." Oak individuals are robust, courageous and strong by nature. People of action who are often adverse to change, Oaks are unrelenting, independent and sensible. Every opposition rouses the fighting spirit of Oak individuals, who possess extraordinary vigor and unflinching endurance, fearing neither death nor the devil. Oak people are happily devoted characters...to family, to neighbors, to a cause, to art...the list is almost endless. They possess a very high self-esteem, believing themselves to be the tool of superior forces and refusing to be duped by pretentious human reason.

March 22 to March 31 - Your Secondary Tree is: the Hazel, whose motto is "To Be The First" or "The Extraordinary." Hazel individuals are charming, undemanding and often extremely understanding...they know how to make a good impression. Hazels are also active fighters

for social causes. They are akin to pioneers, but with a competitive mind which can consume much of the Hazel energy. It is important that Hazels do not tire themselves out by trying to remedy too many faulty situations. Being honest and tolerant, with a precise sense of judgment, they are usually popular people, but can make for moody and capricious partners. Those born under the jurisdiction of this tree are said to have been conceived during the shortest or longest nights of the year and the number 9 is said to be particularly lucky for such individuals.

April 1 to April 10 - Your Secondary Tree is: the Rowan, also known as "The Service Tree," whose motto is "A Delight for Birds" or "The Sensitivity." Rowan individuals are full of charm, cheerful and talented without being egotistical. They like to draw attention and basically love life...even its complications. Somewhat restless, Rowans are both dependent and independent. They constantly strive for approval from others and detest loneliness. Rowans possess excellent taste, are artistic, passionate and emotional, with a burning desire to create a better and more beautiful world. Rowan people make for good company but find it hard to forgive what they perceive to be transgressions.

April 11 to April 14 - Your Secondary Tree is: the Maple, whose motto is "Combative Angel" or "Independence of Mind." Maple individuals are far from ordinary and never completely satisfied with standard replies. They admire those who clearly assert themselves and rise eagerly to any challenge. Maple people are full of imagination and originality, inclined to stand out in a crowd due to their willpower and sense of commitment. Though appearing shy and somewhat reserved, they are truly ambitious, proud and self-confident. Maples hunger for new experiences and have a desire to impress. They enjoy what is unknown, strange and even hostile. The inherent Maple need for independence often clashes with the need to be surrounded by a community. With a tendency to be nervous, Maple people have many complexities. They possess excellent memories and easily learn new things. The love relationships of Maple individuals tend to be complicated affairs.

Alder Deity

The Alder deity is Bran the Blessed, God of the Spirit World, Celtic Raven God and Welsh God of the Underworld. He is also the God of Prophecy, The Arts, War and Writing, among others, and the patron of bards, minstrels and musicians. Said to be colossal in size, Bran was so large that no house or ship could contain him.

A Master of the Isle of Britain, Bran set out with an army to avenge the ill-treatment of his sister Branwen by her husband, King Matholwch of Ireland. Mortally wounded in the foot by a poisoned spear during the battle, he instructed his followers to decapitate him and carry his head to London, where it was buried under the White Mount (now the vicinity of the Tower of London) and set facing France, the chief menace of invasion, in order to defend and protect the realm.

It is said that King Arthur later had the head exhumed and then reburied facing a different way, being loath to have the kingdom guarded by any other than himself and his Knights of the Round Table. Some authorities believe Bran to be the root character of the Fisher King mentioned in Arthurian romance and according to medieval Christian writings, Bran is credited with being the first British man.



The Willow: April 15 - May 12

This tree was sacred to the Moon. Along with Sandalwood, Willow bark aided in the conjuring of spirits forth from the Otherworld. It was also said to help soothe those who felt bitter or jealous and proved to be an effective

medicine in the cure of worms and dysentery. Its wood was often used for planing and lining burial graves due to its associated symbolism with death and protection.

Willow individuals are basically articulate, strong-willed, resourceful and possessed with excellent memories. They touch upon all aspects of nature and its association with the Moon. Emotional and enigmatic, Willow people respond quickly to situations but are prone to sudden mood changes, which can make them difficult to get to know. Being shrewd and practical, they can be brilliant inventors but are also drawn to the unexplained mysteries of life. As a friend, the Willow individual can be a powerful ally...on the other hand, he or she can make for a formidable enemy.

Willows have a type of passive tenacity and can be extraordinarily wise counselors and extremely nurturing parents who are protective of loved ones. The Willow person is often reluctant to forgive and forget, which can lead to permanent rifts with friends and family. In the work force, Willows are usually employed in very responsible positions but find it hard to settle upon a definitive career. If the career choice should be in the field of education, however, they are counted among the best teachers.

Willow individuals seldom express a controversial opinion in public (which makes them appear very amiable) but privately, their views are usually strong one way or the other. They are possessed with an overactive imagination and tend to fret needlessly about health matters. The Willow has a deep interest in family loyalty and history and usually becomes the family genealogist. The figure of the mother tends to dominate and influence the Willow throughout his or her life but once, married, there is no more devoted individual when it comes to the spouse and children.

The lunar energy of Willow people can be positively channeled into the arts, but it can also suddenly activate latent creative skills that may appear to change the personality. For the most part, Willows are incredibly difficult to get to know due to the type of "veil" over their personalities which hides a great deal. Their sense of humor is not always easy to define and tends to "come and go" depending upon the occasion. Blessed with a potential wisdom that makes them wise advisors, they are usually valued members of society.

Willow individuals usually marry at a young age and close personal relationships are of the utmost importance. With the correct partner, Willow individuals create a powerful bond that tends to strike an affinity between the sexes. Willows must learn how to trust their inner voice or they can become moody and chronically indecisive. Since the Moon has always been associated with those who can influence the public with the force of their personality...either good or bad...the Willow individual is usually one to be reckoned with.

There will be some Willow individuals who fail to fit the character pictures described above. These are, in every sense, the great magicians of the world. Appearing on the surface to be the most conventional of human beings, he or she will be experiencing an incredible inner life or imagination.

However, there will be a time when this hidden potential suddenly bursts forth. It may take the form of writing to public figures or perhaps adopting a personal political role to address the rights and wrongs of a particular issue. Then again, there will be periods when such personal motivation ceases as suddenly as it began and the intuitive nature of such a Willow individual appears to crave a complete break from the routine rigors of daily life.

The Willow New Moon / Full Moon

There are two distinct types of Willow individuals. The "new moon" character is associated with the first two weeks of a sign and the "full moon" character is associated with the last two weeks.

The "new moon" Willow individual tends to be more inclined to sudden mood changes and displays more unreliable character traits. These people are however receptive to change

and quick to take advantage of any opportunity which presents itself.

The “full moon” Willow individual tends to disregard advice, even though his or her own reasoning power often lacks credibility. The “full moon” Willow is, however, the most resourceful of the two types and is blessed with an even more exceptional memory than his or her “new moon” counterpart.

Willow Secondary Tree

April 15 to April 20 - Your Secondary Tree is: the Maple, whose motto is “Combative Angel” or “Independence of Mind.” Maple individuals are far from ordinary and never completely satisfied with standard replies. They admire those who clearly assert themselves and rise eagerly to any challenge. Maple people are full of imagination and originality, inclined to stand out in a crowd due to their willpower and sense of commitment. Though appearing shy and somewhat reserved, they are truly ambitious, proud and self-confident. Maples hunger for new experiences and have a desire to impress. They enjoy what is unknown, strange and even hostile. The inherent Maple need for independence often clashes with the need to be surrounded by a community. With a tendency to be nervous, Maple people have many complexities. They possess excellent memories and easily learn new things. The love relationships of Maple individuals tend to be complicated affairs.

April 21 to April 30 - Your Secondary Tree is: the Walnut, whose motto is “Looking for a Homeland” or “The Passion.” Walnut individuals are unrelenting, considered somewhat strange by many and full of contrasts. Often egotistical, Walnuts are aggressive and noble with a broad horizon. They are unexpected and spontaneous in their reactions with little or no flexibility. Walnut people possess unlimited ambition and can make for difficult and uncommon partners. Not always liked but often admired, the Walnut individual is an ingenious strategist, who is very jealous and passionate by nature and rarely given to compromise. Walnuts will accept and endure a multitude of troubles in order to satisfy the desire for pleasure. An uncompromising character, the Walnut individual will undertake a project with inexhaustible perseverance and once in love, tends to love until death.

May 1 to May 12 - Your Secondary Tree is: the Poplar, whose motto is “Overcome Doubt” or “The Uncertainty.” Poplar individuals have a decorative appearance but tend lack self-confidence. They are prone to mature very quickly and assimilate things equally as quickly. Displaying courage only when absolutely necessary and hostile only toward extremists, the narrow-minded or hotheads, Poplar people prefer the goodwill of others and pleasant surroundings. This individual can be somewhat choosy, is often lonely and may harbor great animosity toward others. Artistic by nature, they are good organizers who lean toward philosophy. Reliable in almost any given situation, Poplar people cherish their friends and surround them with love. They take partnerships very seriously but are inclined to be generous only toward those who are generous in return. The life of a Poplar individual is made of judicious transactions and all manner of exchanges. If the Poplar perceives a warm and friendly atmosphere, then the heart and spirit opens...if not, then he or she will withdraw.

Willow Deity

The Willow deity is Ceridwen the Moon Goddess, also known as the Great Mother, Grain Goddess and Goddess of Nature. Ceridwen was the wife of Tegid the Giant and the mother of three children: a beautiful girl named Creirwy and two ugly boys, Avagdu and Movran.

The ancient Welsh Bards called themselves Cerddorion or “Sons of Ceridwen.” The Bard Taliesin was said to have been born of Ceridwen and to have tasted a potent brew from her magic cauldron of inspiration. This potion, known as “greal,” is believed to be

the origin of the word “Grail.” Ceridwen was associated with death, fertility, regeneration, inspiration, magic, astrology, herbs, science, poetry, spells and knowledge. Her symbol was a white sow.

She was said to also be the Goddess of dark prophetic powers and was believed to be the Keeper of the Cauldron of Underworld in which inspiration and divine knowledge are brewed. Ceridwen is often equated with Hecate, the crone of Greek mythology and also to the Greek Muses, but in a more violent and dark form.

Also associated with the Willow is Morgan le Fay, a formidable lunar sorceress and half-sister to King Arthur. It was the power of Morgan le Fay, working against Arthur behind the scenes, which eventually destroyed the unity of the Order of the Knights of the Round Table.

The motivation behind her actions was revenge for the death of her father who had been treacherously killed by Uther Pendragon, the father of Arthur. In Celtic lore, Morgan le Fay symbolizes the darker forces of the psyche, which require great understanding and recognition.



The Hawthorn: May 13 - June 9

The Hawthorn was a symbol of psychic protection due to its sharp thorns. It was also generally seen as a tree which brought good luck to the owner and prosperity to the land upon which it stood. The Celts believed the Hawthorn could assist in releasing negative and/or blocked energy held within.

Hawthorn individuals are charismatic, creative and full of innovative ideas.

Being multi-talented people, they possess an ability to adapt easily to any change in circumstances. They have personal qualities which are akin to those of the ancient Celtic Bards and Druids, often excelling in the performing arts.

They also have a gift for influencing others while still remaining sympathetic. Lively and spontaneous with good communication skills, the Hawthorn individual has an abundance of self-confidence and makes for a great leader. They are honest and sincere as friends, given their natural sympathy and ability to be good listeners. There is a tendency, however, toward a volatile temper and bursts of anger.

The Hawthorn person is adept at devising the most brilliant of plans and schemes. Generally, the great strength of the Hawthorn comes from knowledge regarding the weaknesses of adversaries or any opposing force. However, the Hawthorn individual is not a ruthless character, merely a clever strategist.

Hawthorn individuals often participate in a variety of sporting activities. They possess a sharp sense of humor which is brimming with innuendo...a talent which frequently attracts them to writing and journalism. Due to the Hawthorns low boredom threshold, they frequently have trouble forging a permanent relationship.

However, they do make wonderful parents who cannot be fooled by their “clever” offspring and often lead a colorful and exciting lifestyle. Easily bored, they crave mental stimulation and challenges. With a desire to try a “little bit of everything,” the Hawthorn person often seems to be almost ageless in appearance and character.

Hawthorn New Moon / Full Moon

There are two distinct types of Hawthorn individuals. The “new moon” character is associated with the first two weeks of a sign and the “full moon” character is associated with the last two weeks.

The “new moon” Hawthorn is more impulsive than his or her “full moon” counterpart and bears a stronger sensual nature. On the other hand, the positive traits of these individuals are extremely consolidating once they have decided upon a course of action.

The “full moon” Hawthorn has a distinctly different approach to all things and is much more difficult to “pin down” regarding personal relationships or any type of commitment. The positive traits of the “full moon” Hawthorn is linked to a wider vision which can open the “locked doors” of the mind.

Hawthorn Secondary Trees

May 13 to May 14 - Your Secondary Tree is: the Poplar, whose motto is “Overcome Doubt” or “The Uncertainty.” Poplar individuals have a decorative appearance but tend lack self-confidence. They are prone to mature very quickly and assimilate things equally as quickly. Displaying courage only when absolutely necessary and hostile only toward extremists, the narrow-minded or hotheads, Poplar people prefer the goodwill of others and pleasant surroundings. This individual can be somewhat choosy, is often lonely and may harbor great animosity toward others. Artistic by nature, they are good organizers who lean toward philosophy. Reliable in almost any given situation, Poplar people cherish their friends and surround them with love. They take partnerships very seriously but are inclined to be generous only toward those who are generous in return. The life of a Poplar individual is made of judicious transactions and all manner of exchanges. If the Poplar perceives a warm and friendly atmosphere, then the heart and spirit opens...if not, then he or she will withdraw.

May 15 to May 24 - Your Secondary Tree is: the Chestnut, whose motto is “In Quest of the Truth” or “The Honesty.” Chestnut individuals usually possess unusual beauty and a tendency to be overly-critical of themselves. With no desire to impress and with an inherent distaste for falsehoods, Chestnuts are blessed with a well-developed sense of justice. They are vivacious by nature and very diplomatic, but tend to be sensitive in company and easily driven to irritation...which can be indicative of a lack of self-confidence. Chestnut people will sometimes act superior but basically feel as though they are misunderstood. They are prone to love only once in their lives and often experience great difficulty in finding a partner.

May 25 to June 3 - Your Secondary Tree is: the Ash, whose motto is “Always Aiming Higher” or “The Ambition.” Ash individuals are uncommonly attractive, vivacious, impulsive and demanding. They do not care for criticism, can be egoistic and love to “play with fire.” Ambitious, intelligent and talented, Ash people are prone to allow the brain to rule the head, but they do take partnerships very seriously. It is important to an Ash individual that he or she maintain personal identity, freedom and independence. Nonetheless, Ashes make for trustworthy mates who are faithful, prudent and reliable. Ash people probably care more about the future than those born under any other jurisdiction and are concerned about making progress. If they set themselves a target which requires commitment, then they are willing to give up many things in order to reach that goal. At the peak of glory, Ash individuals often prove to possess a genuine greatness and they will undertake tremendous efforts in order to help others.

June 4 to June 9 - Your Secondary Tree is: the Hornbeam, whose motto is “Monument of Loyalty” or “The Good Taste.” Hornbeam individuals possess a cool beauty and exquisite taste. Although Hornbeams are concerned about their appearance, they are far from egotistical. They like their reasonable and disciplined lives to be as comfortable as possible. Hornbeam people look for kindness and acknowledgment in an emotional partner, though they are seldom happy with their own personal feelings. They are prone to mistrust and are never sure about the decisions they make, although they are the most conscientious characters. There is a tendency for Hornbeams to shoulder the responsibility for mistakes of others, it being more important in their eyes to promote tolerance and maintain harmony

rather than respect rigid rules which demand a scapegoat.

Hawthorn Deity

The Hawthorn deity is Govanna (also known as Govannan or Goibniu). Equated to the Roman God Vulcan, Govanna was the Blacksmith God...custodian of celestial fire and higher powers of the mind. The weapons made by Govanna were deadly in their aim and his armor unflinching in its protection. It was said that those who drank from his sacred cup need never fear old age or infirmity.

To the Irish Gaels, Govanna was known as “Goibniu” or “Great Smith.” In this capacity, he belonged to the triad of craftsmen with Luchtaine the Write (God of Carpenters) and Credne the Brazier (God of Bronzsmiths). Goibniu forged all weapons for the Tuatha De Danaan and his ale bestowed the Tuatha with invulnerability. He was also known as the provider of the Fled Goibnenn, a sacred feast associated with brew-crafting and the designated God of Jewelry-Making, Fire, Metalwork and, not surprisingly, the art of Brewing.

Also associated with the Hawthorn is the Summer Flower Maiden named Olwen (also known as Olwyn). A daughter of the King of Giants, Ysbaddaden Penkawr, her name means “the golden wheel.” She was also called the “Lady of the White Tracks” or “White Footprint” due to the legend that wherever she walked, the trefoil plants commonly called Shamrocks would spring from the ground.

The hero Culhwch (first cousin to King Arthur) was one of Olwen’s suitors. He engaged in a mythic journey to find Olwen’s father, who knew he was doomed if the marriage between Olwen and Culhwch took place. In this portion of the myth, Olwen represents the May Queen...a partner to the new sacrificial God who usurps the old one.

Olwen was also said to have had adventures in faeryland after she was captured by horse-riding faeries. She was rescued by her father after a year and a day of captivity. In lore, May Queens are often linked to the Kingdom of the Fae.



The Oak: June 10 - July 7

The Oak was the principal sacred tree of the Druids, symbolizing truth and steadfast knowledge as well as the turning of the year. The growth of this tree is slow but sure and it is the forest’s marker point, cornerstone and refuge. The Druids often taught lessons beneath the shade of the Oak. The Oak was long considered by the wise to be a guardian which opened doorways to self spirituality and granted the strength to progress onward which, in time, drew the individual closer to the self. The Oak provided the courage to overcome any obstacles which had to be resolved during the travels of an individual and, in time perhaps, to learn the ways of the wise.

The Acorn has long been associated with couples and love divination. Dropping two Acorns into the same bowl of water is said to predict the romantic future...should the Acorns float together, then the couple will marry...the reverse being the case should the Acorns drift apart. The Ancient Druids believed that to carry an Acorn at all times would ensure prevention from aging, a ritual said to be most successful for women.

Oak individuals are enterprising people with a refreshing breadth of vision. They are determined, self-motivated, enthusiastic and responsible. Possessed with a high degree of personal magnetism, Oaks make for natural leaders with a great deal of integrity and find it easy to attract and inspire others. They remain calm during a crisis and are not easily swayed by opposition.

Although serious-minded, Oak people are cheerful and optimistic by nature, with a keen sense of humor that can make the best of a difficult situation. Being optimists

(sometimes blindly so), they do not give up easily and are unafraid to speak the truth in any given situation, regardless of the consequences. However, Oaks do sometimes tend to lack discretion and often take financial risks.

Deeply philosophical, they are generous friends but are prone to exaggerate and are inclined toward vanity. It is important that Oak individuals learn to temper pride with humor or they may become pompous and overbearing. Oak individuals are drawn toward demanding professions. They frequently hold positions of power but have an innate sense of fair play.

They enjoy life's confrontations and make for formidable enemies, but can be naive in the manner in which they place trust in others, especially concerning affairs of the heart. Often, Oak people set standards in love that are too difficult for partners to attain and they place great importance in moral issues.

Oak New Moon / Full Moon

There are two distinct types of Oak individuals. The "new moon" character is associated with the first two weeks of a sign and the "full moon" character is associated with the last two weeks.

The "new moon" Oak individual is more inclined to take financial risks than his or her "full moon" counterpart and makes personal commitment which cannot be easily consolidated. On a more positive note, these people possess strong natural powers of leadership and the ability to rise above the human vices of greed or avarice.

There is an element of self-sacrifice inherent in both the "new moon" and the "full moon" Oak, but those who fall under the jurisdiction of the "full moon" are less inclined to make financial losses. These individuals are generally more flamboyant by nature and can be somewhat glory-seeking in character. Nonetheless, the "full moon" Oak is a creative individual who is generous of spirit with an instinctive sense of survival.

Oak Secondary Trees

June 10 to June 13 - Your Secondary Tree is: the Hornbeam, whose motto is "Monument of Loyalty" or "The Good Taste." Hornbeam individuals possess a cool beauty and exquisite taste. Although Hornbeams are concerned about their appearance, they are far from egotistical. They like their reasonable and disciplined lives to be as comfortable as possible. Hornbeam people look for kindness and acknowledgment in an emotional partner, though they are seldom happy with their own personal feelings. They are prone to mistrust and are never sure about the decisions they make, although they are the most conscientious characters. There is a tendency for Hornbeams to shoulder the responsibility for mistakes of others, it being more important in their eyes to promote tolerance and maintain harmony rather than respect rigid rules which demand a scapegoat.

June 14 to June 23 - Your Secondary Tree is: the Fig, whose motto is "Soul of Kindness" or "The Sensibility." Fig individuals are very strong, independent and somewhat self-willed. They love life, their family and animals but cannot bear to be contradicted. Something of a social butterfly, Figs possess a good sense of humor, practical talent and intelligence. However, there is a tendency toward idleness and laziness. The sensitivity of Fig people can make them find life rather bitter, but they have the necessary strength to preserve a human susceptibility. Born on one of the shortest or longest days of the year, it may be more difficult for Fig individuals to find the right balance between spontaneity and reason...quietness and restlessness...sweetness and bitterness...than it is for others. It is in the Fig nature to switch back-and-forth between the two sides of this flexible personality, along with a tendency to exaggerate from time-to-time.

June 24 - Your Secondary Tree is: the Birch, whose motto is "Light of the Initiates" or "The Inspiration." Birch individuals are vivacious, attractive, elegant and friendly. They are unpretentious characters, modest with little ambition, who dislike anything in excess. With a distaste for what they perceive to be vulgar, Birch people love life in nature and are calm individuals. While not very passionate in character, Birches are nonetheless full of imagination and tend to create a content atmosphere. They are helpful and devoted people but often experience personal disappointments. There is a great tendency for the Birch individual to lapse into excessive tyranny or selfishness if he or she suffered any type of abuse as a child.

June 25 to July 4 - Your Secondary Tree is: the Apple, whose motto is "Fulfilled In Love." The Apple Tree is the tree of perfection, the love link that unites nature with mankind, life with death and the beyond with the here and now. It is one of the seven sacred Celtic trees. The Celtic calendar has only two fruit trees...one is the Apple and the other is the Fig. Apple individuals are usually slight of build and blessed with an abundance of charm, appeal and attraction. They exude a pleasant aura and are flirtatious, adventurous and sensitive. Always in love, Apple people seek to be loved and make for faithful and tender partners. They are generous, stable and possessed with scientific talents. A person who "lives for today," the Apple individual is a carefree philosopher endowed with imagination who dreams about an untroubled life with no division. Apples are excellent mediators, their moral tolerance being beyond reproach and they like to be in contact with people they can help, for by helping others, they can often help themselves out of a bad patch.

July 5 to July 7 - Your Secondary Tree is: the Fir, whose motto is "To Watch Over Every Birth" or "The Mysterious." Fir individuals have extraordinary taste, dignity and sophistication. They love anything that is beautiful, but tend to be somewhat moody and stubborn. Though somewhat egotistic, Fir individuals nonetheless care deeply for those close to them. They are usually quite modest, very ambitious, talented and industrious. Fir people tend to make many friends...and equally as many foes...but are very reliable in character. Reserved about everything that affects them closely, Fir individuals tend to take refuge beneath the facade of prosperity, with a paradoxical need to feel free and protected at the same time.

Oak Deity

The Oak deity is Dagda, the Father of All Gods, also known as the "Good God" and the Irish Lord of the Land. Ancient with gray hair, Dagda was grounded and simple in every way. He is usually depicted as wearing a brown, low-necked tunic, a short hooded cloak and horse-hide boots with the hairy side outward.

Dagda possessed a cauldron known as the "Undry," which came from Murias... one of the four mythical cities of the Tuatha De Danaan...and which provided food to all according to the merits of the individual. According to legend, nobody ever left the "Undry" unsatisfied. Believed to be very fond of porridge, the Dagda was said to consume large bowls of it. As "Lord of the Land," the Dagda was a valiant defender who performed great deeds in the battle between his family, the Tuatha and the Fomors... native Gods of Ireland.

He was said pull after him a giant wheel on which rested his eight-pronged war club... a weapon so huge that it would take eight mortal men to lift, while the wheel itself would leave a deep furrow in the ground.

During times of peace, the Dagda would play his living harp, also known as the "Oak of the Two Cities" or "Hand of Fourfold Music." As he played, the music would cause the seasons to process in order... Spring to Summer... Summer to Autumn... Autumn to Winter... and Winter again to Spring.

The wife of the Dagda was Boann, Goddess of the River Boyne, and their son, Angus

mac Og, was the Irish God of Love. Eventually driven underground following the conquest of Ireland by mortal humanity, the Dagda became the new King of the Tuatha De Danaan. His final resting place is said to be a small barrow near the River Boyne. This barrow has never been excavated.



The Holly: July 8 - August 4

It was believed that Holly restore lost energy, bestowing the strength needed to continue toward a resolution. The Holly offered empathy and understanding within its branches and was often associated with goodwill and love. For this reason, it was frequently planted near homes for protection and to ward off evil, psychic attacks and demons.

The Holly was thought to repel enemies and warriors would carry cudgels and fashion spear shafts made of its wood. The Holly also represented the eternal, ever-green aspects of Mother Earth. The Holly was particularly sacred to the Druids who instructed folk to take it into their homes during Winter in order to provide shelter for the Elves and Faeries during cold weather. This is said to protect against lightning and ensure good fortune.

Holly individuals are practical, capable and steadfast in the face of adversity. Being cautious, logical and efficient, they possess a good business sense, but prefer to assist rather than lead. In relationships, Holly people are supportive, protective and possessive. Holly individuals have a tendency to strive for perfection, which often leads to loss of confidence and direction.

They exhibit a large amount of personal integrity and tend to influence things a great deal, but usually behind the scenes. Their word is literally their bond and honor is their guiding principle. The weak point of the Holly individual is sensitivity to personal criticism... his or her need for constant affection and attention can make the Holly demanding in a close relationship.

There may also be a tendency to exhibit a miserly attitude. Not known to be risk-takers until all the facts have been gathered, the Holly individual possesses the ability to solve difficult problems through the use of simple logic.

Holly individuals are attracted to banking and insurance. They are strong-willed and make for trustworthy friends with a great reserve of physical endurance. Down-to-earth people, they usually possess much spiritual contentment. The Holly individual tends to be a collector of artifacts and has an excellent eye for a "good deal." As a mate, the Holly person is affectionate...although often overly-protective...not inclined to wander and frequently marries a childhood sweetheart.

Hollies also make for tolerant and very supportive spouses and tend to have a number of close friends of both sexes. Although sometimes appearing to lack a sense of humor, this is chiefly due to the dislike of the Holly individual to laugh at the expense of another. Holly people can be reclusive and all require a quiet place of their own in which to take respite from the huge responsibilities they usually place upon themselves.

The Holly New Moon / Full Moon

There are two distinct types of Holly individuals. The "new moon" character is associated with the first two weeks of a sign and the "full moon" character is associated with the last two weeks.

The "new moon" Holly individual is more inclined to become involved with the dreams and ambitions of others by providing both financial and emotional support. While this is indicative of an unselfish and sympathetic nature, it can lead to a blind optimism which may be personally damaging.

The "full moon" Holly individual is more committed to his or her own dreams and

ambitions. Such people are likely to become the founding members of societies or business corporations while still retaining a sense of history and tradition. The "full moon" Holly individual, however, is frequently hypersensitive to personal criticism and may be forced to retreat periodically from the world.

Holly Secondary Trees

July 8 to July 14 - Your Secondary Tree is: the Fir, whose motto is "To Watch Over Every Birth" or "The Mysterious." Fir individuals have extraordinary taste, dignity and sophistication. They love anything that is beautiful, but tend to be somewhat moody and stubborn. Though somewhat egotistic, Fir individuals nonetheless care deeply for those close to them. They are usually quite modest, very ambitious, talented and industrious. Fir people tend to make many friends...and equally as many foes...but are very reliable in character. Reserved about everything that affects them closely, Fir individuals tend to take refuge beneath the facade of prosperity, with a paradoxical need to feel free and protected at the same time.

July 15 to July 25 - Your Secondary Tree is: the Elm, whose motto is "Noble Attitude." Elm individuals are usually pleasantly built and are fond of tasteful clothes. Their demands are modest and they are practical by nature. There is a tendency to be unforgiving of those who make mistakes, but they are otherwise cheerful. With a desire to lead, the unconventional Elm individual dislikes being given orders, but does make for an honest and faithful partner. With an inherent dislike of selfish people and those who "follow the pack," the ideals of Elm people lean strongly toward justice and tolerance. Although Elm individuals are prone to make decisions on behalf of others, they are nonetheless noble-minded and generous with a good sense of humor. Those who fall under the jurisdiction of the Elm detest being labeled...even if that label be a flattering one.

July 26 to August 4 - Your Secondary Tree is: the Cypress, whose motto is "Song of Resurrection" or "The Faithfulness." Cypress individuals are strong, muscular and adaptable, taking what life has to offer. Content and optimistic, Cypress people crave money and acknowledgment and hate to be lonely, although they are prone to pursue independence. They are passionate individuals, with a love which is difficult to satisfy, but are nonetheless faithful. Cypress individuals have a tendency to be quick-tempered, unruly, pedantic and careless. They often possess a biting irony and a certain taste for sarcasm, acquired by virtue of their tendency to bravely undergo the hardest of blows and thereby learn how to free themselves from the burdens of life.

Holly Deity

The Holly deity is Danu (also known as Dana or Anu), the Goddess after whom the Tuatha De Danaan were named and the Mother Goddess of Irish mythology. Her divine children (which included the Dagda, Dian Cecht, Ogma, Llyr and many others) were the Gods and Goddesses who ruled Ireland prior to the arrival of the Milesians.

Danu was also usually considered to be the equivalent of the Welsh Goddess, Don. Despite her preeminent position, Danu remains a vague figure and does not otherwise play a prominent part in either Irish or Welsh folklore, due to the possibility that monks from the Fifth Century onward greatly underplayed the original role of this Goddess in their compilations. Danu is often associated with universal wisdom, magic, the creation of the cosmos and world, the seasons, life-giving rain, the primordial essence of nature and sacred grove.



The Hazel: August 5 - September 1

The Hazel was considered to be the Tree of Wisdom and to fell one was once a crime punishable by death. It was believed that magical skills and knowledge could be gained from eating Hazel nuts, which are the emblems of concentrated wisdom. The Hazel was a favored tree of the Druids, some of whom preferred its wood over that of the Oak for their staffs, given its conductive nature. The Hazel was said to be a reminder to trust and listen to intuition which, in essence, is trust in the self. It was believed to promote thought processes and the flow of inspiration while accepting responsibility for actions.

Hazel individuals are perceptive and clever people, endowed with good reasoning powers. This sharpness of intellect makes for excellent debaters and writers. They are also wonderful planners and organizers...even down to the smallest detail. The desire to acquire knowledge often leads to Hazel individuals becoming adept scholars and they are frequently experts in their chosen fields. They have lively and analytical minds, possess a great deal of imagination and are radical and idealistic thinkers.

Their artistic abilities often lead them to create beautiful things which have very practical uses. Sometimes known as the mediators of society, Hazels are keen observers of the truth around them and able to judge an entire situation in a very short period of time. There is, however, a tendency for Hazel people to sometimes become paranoid and lack self-worth. Their abundance of nervous energy (more mental and emotional rather than physical) needs to be constantly channeled or they may become prone to sudden headaches and migraines.

Hazel individuals dislike pretense, false values and waste of any kind. They are probably the most rational of all the Celtic signs and always appear to be cool and reserved, which enables them to remain outside of life's emotional sphere. Such personal emotional surface control, however, may simply be a cover for a highly sensitive nature and they are prone to suffer from nervous tension.

Physically, the Hazel is not necessarily robust, but is possessed with a strong mental stamina. Hazels individuals are blessed with agile minds able to cope with any extremes, but they have a tendency to be most critical of their own shortcomings and may suffer from low self-esteem.

At times, Hazels have been known to become argumentative or even cynical and may resort to underhanded means (such as prying) in order to attain the knowledge they are always constantly seeking. As mates, Hazel individuals are honest and caring, but may be inclined to overindulge their children and spouses. Though not particularly demonstrative people, they are sincere and inspire great loyalty from others.

The Hazel New Moon / Full Moon

There are two distinct types of Hazel individuals. The "new moon" character is associated with the first two weeks of a sign and the "full moon" character is associated with the last two weeks.

The "new moon" Hazel individual is more inclined to seek out knowledge than his or her "full moon" counterpart. These people possess an inquisitive nature which can, at times, become prying or underhand. The "full moon" Hazel individual is more outgoing in nature and temperament. These people are also more inclined to become public figures who seek to educate or instruct people in the arts.

The "full moon" Hazel sets a high regard on honesty and has well-defined principles. Such people can, however, be very critical in attitude...usually stemming from an inbuilt hypersensitivity. Hazel individuals need to express their creativity or they could easily become morbid and introspective.

Hazel Secondary Trees

August 5 to August 13 - Your Secondary Tree is: the Poplar, whose motto is "Overcome Doubt" or "The Uncertainty." Poplar individuals have a decorative appearance but tend lack self-confidence. They are prone to mature very quickly and assimilate things equally as quickly. Displaying courage only when absolutely necessary and hostile only toward extremists, the narrow-minded or hotheads, Poplar people prefer the goodwill of others and pleasant surroundings. This individual can be somewhat choosy, is often lonely and may harbor great animosity toward others. Artistic by nature, they are good organizers who lean toward philosophy. Reliable in almost any given situation, Poplar people cherish their friends and surround them with love. They take partnerships very seriously but are inclined to be generous only toward those who are generous in return. The life of a Poplar individual is made of judicious transactions and all manner of exchanges. If the Poplar perceives a warm and friendly atmosphere, then the heart and spirit opens...if not, then he or she will withdraw.

August 14 to August 23 - Your Secondary Tree is: the Cedar, whose motto is "Moral Greatness" or "The Confidence." Cedar individuals are often possessed of rare beauty. They know how to adapt, have a love of luxury and are usually blessed with good health. Not in the least shy, Cedar people are prone to sometimes look down on others, they themselves brimming with self-confidence. Determined and often impatient, Cedar individuals like to impress. They have many talents, are industrious and possess a healthy optimism and inner strength. Alert and usually thoughtful, the Cedar lives in enlightenment, responding to precise self-imposed requirements. Neither success nor failure can erode the serenity or the determination of a Cedar individual. Otherwise able to make quick decisions, Cedar people seem to constantly be waiting for their one true love.

August 24 to September 1 - Your Secondary Tree is: the Pine, whose motto is "Father of Wisdom" or "The Particular." Pine individuals are very robust and active, and also tend to be cautious, provident and hard-working people. They are idealists, being trustworthy and practical by nature. They love agreeable company and know how to make life comfortable without being selfish...if Pine individuals have a benefit, it will almost always reflect on those around them. They make for good companions, though not always overly-friendly to those they do not know. Pine people fall in love easily, but with a passion which is prone to burn out quickly. They have a tendency to give up without much struggle and may suffer many disappointments in life.

Hazel Deity

The Hazel deity is Oghma (also known as Ogma), son of Boann and The Dagda. The God of Communication and Writing, as well as Literature and Eloquence, Oghma is said to have invented the Ogham Alphabet and made a gift of it to the Druids. He is often considered the Patron Deity of Poets. Oghma was also the champion or designated warrior representative of the Tuatha De Danaan and fought with Lugh against the Fomorians (ancient Irish Sea Gods).

In myth, he assumed the role of helping to escort the recently-dead to the Otherworld. Credited with more personality than many of the old Irish deities, Oghma was given two nicknames. The first was "Cermait" which means "honey-mouthed" and is related to the Irish gift of the gab also known as blarney.

The other was "Grianainech," which means "the sunny-faced," believed to come from Oghma's great wisdom. Oghma was married to Etan, daughter of Diancecht the Irish God of Medicine, and three of his sons eventually became co-rulers of the Tuatha. In the final battle at Mag Tuireadh, Oghma managed to wrestle the sword from the King of the Fomorians, but

was obliged to pay for this mighty accomplishment with his life. He is often equated with Heracles, Greek hero and son of Zeus.

The Hazel is also sacred to Manannan mac Lir, a chameleon-like Sea-God who was a shape-shifter and master of disguise. Son of the Sea-God Llyr, Manannan dressed in a green cloak and wore a gold headband. The Isle of Arran (also known as the "Land of Promise") in the Firth of Clyde and the Isle of Man (which was so named in Manannan's honor) once fell under his particular protection.

His palace at Arran (called Emhain of the Apple Trees) housed Manannan's swine which constantly renewed themselves and were the chief food of the Tuatha De Danann, preventing them from aging. Manannan possessed many famous weapons, as well as a self-propelled ship and magical armor which staved off wounds and had the power to make the Tuatha invisible.

Manannan was not a popular God until the Celts (chiefly a herding people) took to the sea. There are many legends associated with Manannan in mythology (several of which are contradictory). It is believed that Manannan was the one who decreed that the world of fairy and world of humans should forever remain separated when Fand, one of his many wives, fell in love with Cuchulain the Hero of Ulster.



The Vine: September 2 - September 29

In the cool Celtic climate, the Grapevine required much care in order to bear fruit and became symbolic of sacred knowledge and spiritual initiation, as well as a symbol of sensuality and emotions. Wine was also once used to stimulate prophecy in the seers by allowing such sages to reach deep within their inner selves, with intuition acting as their guide.

Vine individuals are discriminating, authoritative and set high personal standards. They appear cool and detached but are secret romantics who can be sensitive, vulnerable and self-critical. Keenly perceptive, they have an eye for detail and possess a refined aesthetic taste. With an oddly dual personality, Vine people can be joyful and exuberant one moment and driven to tears the next. Their emotions tend to run on high, despite their outward appearance of calm when facing danger or opposition. Instinctive organizers, Vine individuals are drawn to public service careers.

They are kind, gentle, creative and good socializers...people who adore both theater and music. However, they have a propensity at times toward over-indulgence. Simple people who require a great deal of mental and emotional security in order to feel content, Vine individuals are not usually highly ambitious in their pursuits but do have a strong sense for survival. It is important that Vine people learn to balance both sides of life... the sowing and the reaping.

Vine individuals have a tendency to procrastinate, which must be overcome in order to avoid becoming lost in worry and negativity. Although their emotions run at a high level and they are, by nature, very sensual, Vines tend to display a reserved exterior and are possessed of a serenity in spirit. While Vines generally help to create harmony and stability, they can become rather parasitic...or even totally dependent...on the good nature of others.

As sweethearts, Vine people are passionate in character, but their dual nature often makes a marriage difficult to sustain. They possess an earthy quality which some people find extremely attractive while others will find them to be aloof. Refined individuals with a good sense of humor (provided such humor is not too coarse), Vine people can be easily hurt by lack of consideration from others.

Always ahead of the field when it comes to contingency plans and one of the Celtic Zodiac's instinctive organizers of life, it is a great mistake to underestimate the character of a Vine individual.

The Vine New Moon / Full Moon

There are two distinct types of Vine individuals. The "new moon" character is associated with the first two weeks of a sign and the "full moon" character is associated with the last two weeks.

The "new moon" Vine individual is more inclined to openly express his or her emotions but often has trouble in coming to terms with certain aspects of life. Such a person is, however, enthusiastic by nature and very supportive of any partner.

The "full moon" Vine individual is possessed with a wonderful ability to forgive with true compassion, but somewhat more difficult to comprehend than his or her "new moon" counterpart and is more prone to over-indulge the sensuous Vine nature.

Vine Secondary Trees

September 2 - Your Secondary Tree is: the Pine, whose motto is "Father of Wisdom" or "The Particular." Pine individuals are very robust and active, and also tend to be cautious, provident and hard-working people. They are idealists, being trustworthy and practical by nature. They love agreeable company and know how to make life comfortable without being selfish...if Pine individuals have a benefit, it will almost always reflect on those around them. They make for good companions, though not always overly-friendly to those they do not know. Pine people fall in love easily, but with a passion which is prone to burn out quickly. They have a tendency to give up without much struggle and may suffer many disappointments in life.

September 3 to September 12 - Your Secondary Tree is: the Weeping Willow, whose motto is "Nothing Unknown" or "The Melancholy." Willow individuals are extraordinarily attractive and very empathetic...but filled with melancholy. They adore anything beautiful and tasteful and possess an inherent desire to travel. Both psychologically and intellectually, Willows are flexible and adaptable, blessed with a tolerance which allows them to identify with the most diverse of people. Practical-minded, Willow individuals are able to remain calm during "hustle and bustle." Being restless and capricious dreamers, Willow people are not always easy to live with, often demanding by nature. Honest with good intuition, Willows nonetheless frequently suffer greatly in matters of the heart before they find an anchoring partner.

September 13 to September 22 - Your Secondary Tree is: the Lime (whose motto is "The Doubt") or the Linden (whose motto is "Protector of the Oak Trees")...dependent upon the source. Lime individuals are said to be inclined to accept in a composed fashion whatever life hands to them. They detest fighting, stress, laziness and idleness. Limes are relenting people who will often make sacrifices for their friends. They possess many talents but lack the tenacity to make those talents blossom. Lime people can be somewhat jealous and complaining by nature, but are very loyal individuals. Linden individuals are said to love life. No matter how much such people may try to convince themselves that everything is perfect, they cannot help but wonder why their ideas and dreams are more beautiful than reality. Extremely imaginative, Linden people tend to look at the world through "rose-colored glasses." This is an ideal that they are often able to convey to those around them who may then also view life in a more beautiful manner.

September 23 - Your Secondary Tree is: the Olive, whose motto is "Friend of Wisdom." Olive individuals love the Sun, warmth and kind feelings. They are reasonable, well-balanced individuals who tend to avoid aggression and violence. Tolerant and cheerful characters, Olives possess a sense of justice and are calm, sensitive people who are empathetic, free from jealousy and strive to ensure that harmony prevails. Olive individuals love to read and enjoy the company of sophisticated people. However, the accommodating attitude of Olive people can jeopardize them in a cruel world and they are liable to easily follow any current fashion.

September 24-September 29

Your Secondary Tree is: the Hazel, whose motto is "To Be The First" or "The Extraordinary." Hazel individuals are charming, undemanding and often extremely understanding...they know how to make a good impression. Hazels are also active fighters for social causes. They are akin to pioneers, but with a competitive mind which can consume much of the Hazel energy. It is important that Hazels do not tire themselves out by trying to remedy too many faulty situations. Being honest and tolerant, with a precise sense of judgment, they are usually popular people, but can make for moody and capricious partners. Those born under the jurisdiction of this tree are said to have been conceived during the shortest or longest nights of the year and the number 9 is said to be particularly lucky for such individuals.

Vine Deity

The Vine deity is Branwen, also known as "Fair Bosom," sister of Bran the Blessed and wife of the Irish King Mathowch. Branwen was the daughter of Llyr, Lord of the Sea and literary ancestor of Shakespeare's King Lear. Otherwise called "Venus of the Northern Seas," Branwen was one of the three matriarchs of Britain and the Welsh Goddess of Love, Sexuality and the Sea.

She is often equated with the Greek Goddess Aphrodite. Branwen encompassed the doom of both the Irish and the Britons when her brother Bran invaded Ireland in order to rescue her from the degradation she experienced at the hands of a vengeful court.

Branwen is said to have died of a broken heart during the war between Wales and England, which began with an insult delivered at Branwen's wedding feast which Branwen believed had been her fault. The insult had, in fact, been the deliberate act of Evnissyn, a jealous courtier who thrived on malicious mischief.

The Vine is also sacred to Etain, wife of Midir, Irish Lord of the Underworld, and to the Tuatha De Danaan, Gods of Light and Goodness.



The Ivy: September 30 - October 27

The power of the Ivy lies in its ability to cling and bind, making it a potent symbol of determination and strength to the Druids. Considered to be powerful indeed by the Celts because of its ability to kill even the mightiest Oak, the Ivy has a tendency to create dense, impenetrable thickets in the forest. It was regarded to be much more powerful than the Vine and rather sinister in nature.

Ivy individuals have great personal stamina and a wealth of talents that can bring personal honors and public recognition. Such people are generally colorful characters with a unique style which is all their own. Restless by inclination, Ivy people are nonetheless sociable and good-natured. Cheerful, expansive and magnetic, they easily win friends and dislike offending others.

Although frequently indecisive, Ivy individuals are far from weak-willed and will tackle difficult tasks with infectious optimism. They also possess a sharp intellect which is matched only by their sense of humor...however, their personal doubts and fears can manifest into strange dreams and personal encounters. Blessed with profound artistic flair, Ivy people tend to be greatly valued as friends.

On the more serious side, Ivy people have a quiet type of faith and a belief in the natural balance of things. Extremely loyal, they are capable of accepting responsibility for their own actions. They tend to attract people who have little or no morals and should keep that in mind when making new friends. Ivy individuals usually make for poor students...they simply are not "book learners" and garner knowledge better by way of experience.

They also have a propensity to not be very lucky people. Romantically, the Ivy

person is very sensitive but seems to fall in and out of love at the drop of a hat. When in love, Ivy individuals lean strongly toward being the "clingly" type, but they make generous and caring parents. It is important that Ivy individuals not get too caught up in the problems of others or they are prone to suffer disappointment and betrayal.

The Ivy New Moon / Full Moon

There are two distinct types of Ivy individuals. The "new moon" character is associated with the first two weeks of a sign and the "full moon" character is associated with the last two weeks.

The "new moon" Ivy individual is a rather radical thinker...something akin to the Rowan individual...but with a more artistic temperament. Such people, however, do have a tendency to be somewhat indecisive and their success rate has a propensity to swing between two extremes which will set the pattern of life accordingly.

The "full moon" Ivy individual radiates a successful image all the time, even while suffering a reverse of fortune. These people are generous providers, but can be shrewd when it comes to their financial resources and income. The "full moon" Ivy individual can also be extremely manipulative and liable to use any position of power in a ruthless manner. As a result, this individual often becomes involved in disputes and litigations.

Ivy Secondary Trees

September 30 to October 3 - Your Secondary Tree is: the Hazel, whose motto is "To Be The First" or "The Extraordinary." Hazel individuals are charming, undemanding and often extremely understanding...they know how to make a good impression. Hazels are also active fighters for social causes. They are akin to pioneers, but with a competitive mind which can consume much of the Hazel energy. It is important that Hazels do not tire themselves out by trying to remedy too many faulty situations. Being honest and tolerant, with a precise sense of judgment, they are usually popular people, but can make for moody and capricious partners. Those born under the jurisdiction of this tree are said to have been conceived during the shortest or longest nights of the year and the number 9 is said to be particularly lucky for such individuals.

October 4 to October 13 - Your Secondary Tree is: the Rowan, also known as "The Service Tree," whose motto is "A Delight for Birds" or "The Sensitivity." Rowan individuals are full of charm, cheerful and talented without being egotistical. They like to draw attention and basically love life...even its complications. Somewhat restless, Rowans are both dependent and independent. They constantly strive for approval from others and detest loneliness. Rowans possess excellent taste, are artistic, passionate and emotional, with a burning desire to create a better and more beautiful world. Rowan people make for good company but find it hard to forgive what they perceive to be transgressions.

October 14 to October 23 - Your Secondary Tree is: the Maple, whose motto is "Combative Angel" or "Independence of Mind." Maple individuals are far from ordinary and never completely satisfied with standard replies. They admire those who clearly assert themselves and rise eagerly to any challenge. Maple people are full of imagination and originality, inclined to stand out in a crowd due to their willpower and sense of commitment. Though appearing shy and somewhat reserved, they are truly ambitious, proud and self-confident. Maples hunger for new experiences and have a desire to impress. They enjoy what is unknown, strange and even hostile. The inherent Maple need for independence often clashes with the need to be surrounded by a community. With a tendency to be nervous, Maple people have many complexities. They possess excellent memories and easily learn new things. The love

relationships of Maple individuals tend to be complicated affairs.

October 24 to October 27 - Your Secondary Tree is: the Walnut, whose motto is "Looking for a Homeland" or "The Passion." Walnut individuals are unrelenting, considered somewhat strange by many and full of contrasts. Often egotistical, Walnuts are aggressive and noble with a broad horizon. They are unexpected and spontaneous in their reactions with little or no flexibility. Walnut people possess unlimited ambition and can make for difficult and uncommon partners. Not always liked but often admired, the Walnut individual is an ingenious strategist, who is very jealous and passionate by nature and rarely given to compromise. Walnuts will accept and endure a multitude of troubles in order to satisfy the desire for pleasure. An uncompromising character, the Walnut individual will undertake a project with inexhaustible perseverance and once in love, tends to love until death.

Ivy Deity

The Ivy deity is Arianrhod whose name means "Silver Circle." She is also known as "Star Goddess," "Full Moon Goddess" and "Virgin Goddess of Reincarnation," among others. Her palace was called "Caer Arianrhod," otherwise known as the Aurora Borealis.

She was Keeper of the Silver Wheel of Stars...a symbol of time and/or karma. This wheel was also known as the "Oar Wheel," a ship which carried dead warriors to Emania, the Moon Land. Arianrhod is sometime depicted as a weaver, linking her to lost myths of creation and magical practices. Daughter of the great Welsh Goddess Don, Arianrhod is said to be useful in helping females find their own feminine power.

A second deity associated with the Ivy is Rhiannon, the "Great Queen" who was Goddess of Birds and Horses, as well as Enchantments, Fertility and the Underworld. Unjustly accused of destroying her newborn son (who had been kidnapped by a nameless Fiend), Rhiannon is compelled to assume the shape of a Horse until her son is unexpectedly returned to her.

In her role as a Death Goddess, Rhiannon would sing sweetly enough to lure all those within hearing to their doom. Another legend suggests that Rhiannon was the mistress of three marvelous Birds whose song could wake the dead and lull the living to sleep.

Because of her association with Horses (she first appears in myth mounted upon a White Horse), Rhiannon is often equated to Epona, the Roman-Gaulish Horse-Goddess.



The Reed: October 28 - November 24

The Druids believed the Reed to be a tree because of its dense system of roots. Cut reeds were used as pens and symbolized wisdom and scholarship. It was associated with being both a savior and a custodian as well as a symbol of royalty. It was used in the making of instruments such as flutes and pipes.

Reed individuals are imaginative with a clear view of complex matters. They make for powerful friends but can also be powerfully jealous...a jealousy which is prone to turn to violence if not held in careful check. Reed people constantly strive for complete power, both within as well as without. They are wonderful leaders but often fall victim to the "Peter Pan" syndrome.

They make for immensely caring and passionate mates as long as their jealous streak can be kept under control. Reed people are usually the catalysts of life rather than the competitors, being more concerned with changing the entire formula of life instead of simply certain aspects. They are known as the great survivors of life but often meet with the hostility of others rather than the offer of a helping hand. It is necessary for Reed individuals to unite a sense of purpose with their strong will in order to prevent a path toward self-destruction.

Reed individuals are complex, tenacious and fearless. Proud and independent, they have great strength of character and will rarely compromise, believing they have a role to play which excludes any signs of weakness or the luxury of "sitting on the fence." Reed people are forceful and thrive on challenges, holding an innate belief in their own destiny. Possessed with a powerful presence and a great deal of personal magnetism, Reed individuals attract most people but tend to repel the overly-sensitive.

They are never found lacking in the ability to surmount even the most overwhelming odds. Due to their power, however, they must follow a narrow line of virtuous morals. If that line is strayed from, then they can become very dangerous people.

The Reed New Moon / Full Moon

There are two distinct types of Reed individuals. The "new moon" character is associated with the first two weeks of a sign and the "full moon" character is associated with the last two weeks.

The "new moon" Reed individual make both powerful friends and powerful enemies, given his or her initial response of impatience and impulsiveness. Even so, such people will usually maintain their positions of power and achieve a great deal of respect, particularly from their adversaries.

The "full moon" Reed individual plans his or her moves with more subtlety and will probably achieve more public recognition. However, such people are inclined to want to move onto other things...an action which can often undermine their true sense of purpose.

Reed Secondary Trees

October 28 to November 11 - Your Secondary Tree is: the Walnut, whose motto is "Looking for a Homeland" or "The Passion." Walnut individuals are unrelenting, considered somewhat strange by many and full of contrasts. Often egotistical, Walnuts are aggressive and noble with a broad horizon. They are unexpected and spontaneous in their reactions with little or no flexibility. Walnut people possess unlimited ambition and can make for difficult and uncommon partners. Not always liked but often admired, the Walnut individual is an ingenious strategist, who is very jealous and passionate by nature and rarely given to compromise. Walnuts will accept and endure a multitude of troubles in order to satisfy the desire for pleasure. An uncompromising character, the Walnut individual will undertake a project with inexhaustible perseverance and once in love, tends to love until death.

November 12 to November 21 - Your Secondary Tree is: the Chestnut, whose motto is "In Quest of the Truth" or "The Honesty." Chestnut individuals usually possess unusual beauty and a tendency to be overly-critical of themselves. With no desire to impress and with an inherent distaste for falsehoods, Chestnuts are blessed with a well-developed sense of justice. They are vivacious by nature and very diplomatic, but tend to be sensitive in company and easily driven to irritation...which can be indicative of a lack of self-confidence. Chestnut people will sometimes act superior but basically feel as though they are misunderstood. They are prone to love only once in their lives and often experience great difficulty in finding a partner.

November 22 to November 24 - Your Secondary Tree is: the Ash, whose motto is "Always Aiming Higher" or "The Ambition." Ash individuals are uncommonly attractive, vivacious, impulsive and demanding. They do not care for criticism, can be egotistic and love to "play with fire." Ambitious, intelligent and talented, Ash people are prone to allow the brain to rule the head, but they do take partnerships very seriously. It is important to an Ash individual that he or she maintain personal identity, freedom and independence. Nonetheless, Ashes make for trustworthy mates who are faithful, prudent and reliable. Ash people probably care

more about the future than those born under any other jurisdiction and are concerned about making progress. If they set themselves a target which requires commitment, then they are willing to give up many things in order to reach that goal. At the peak of glory, Ash individuals often prove to possess a genuine greatness and they will undertake tremendous efforts in order to help others.

Reed Deity

The Reed deity is Arawen (or Arawn), King of the Underworld, also known as “King of Hell” and “God of Annwn.” His name means “silver-tongued.” Arawen fought alongside Bran in the Battle of the Trees against Amathaon and Gwyddion. Like most Gods of the OtherWorld, Arawen was a master hunter who rode a pale Horse, followed by a pack of white, red-eared Hounds.

The traditional purpose of this hunt was to gather souls for the Otherworld... assuming the quarry did not prove to be clever enough to evade the chase. According to legend, domestic Pigs did not arrive in Britain until they were presented as a gift to Pryderi by Arawen.

Arawen was said to have possessed a magical cauldron of regeneration, later captured by King Arthur. In other Arthurian tales, Arawen is featured as one of Arthur’s “Three Counseling Knights.” His name was later changed to “Anguish” or “Anguissance” and he was made King of Ireland or Scotland.

Also associated with the Reed is Pwyll, Prince of Dyfed (in what is today known as Wales). His chief court was said to have been at Arbeth. Strongly associated with the Otherworld, he was the occasional ruler of that Realm (an honor he shared with Arawen), at which times he was bestowed with the title “Lord of Beyond.” Pwyll was given “The Stone” (one of four treasures) for safekeeping. “The Stone” symbolized the right of monarchs to possess divine power.



The Elder: November 25 - December 23

To the Celts, the Elder was the symbol of both death and rebirth. Its twigs were said to enable the wearer to see spirits and experience visions. Justice was dispensed by the Druids beneath this tree.

The Elder individual evolves gradually during his or her lifetime. In youth, such people are inclined to waste much time and energy on worthless ventures or projects. They are often fortunate individuals who frequently benefit at an early age from inheritances. However, this usually only encourages their extravagant tastes and indulgences.

With a basic restlessness and/or insatiable curiosity, Elder individuals are drawn into the study of profound subjects and are prone to travel great distances in order to further their knowledge. Elder individuals are self-sufficient, lively and outspoken. They dislike routine and refuse to be pressured by others. Highly energetic with a great deal of stamina, they thrive on change and crave constant mental and physical challenge.

In later life, the Elder individual commands respect and possesses a great deal of patience. However, Elders can sometimes be heartless and cruel, and have a tendency to lack good judgment in their choice of friends. Ambitious, with a driving force to win at all costs, Elder characters are often outspoken and prone to speak without first thinking, but they possess a constructive approach to life and are frequently drawn to careers in the military or journalism.

The true strength of Elders lie in the instinctive knowledge of when they are right and others are wrong, coupled with their inherent inclination toward self-discipline. The Elder individual is open in his or her relationships, but tends not to fall in love very deeply,

seemingly able to remove their emotions from most situations.

While finding it difficult to tame their restless natures enough to take on parenthood, Elders do make wonderful uncles and aunts. It is important that Elder individuals learn to use change as a positive force in their lives in order to avoid becoming reckless and confused.

The Elder New Moon / Full Moon

There are two distinct types of Elder individuals. The “new moon” character is associated with the first two weeks of a sign and the “full moon” character is associated with the last two weeks.

The “new moon” Elder individual is usually more outspoken and impulsive than his or her “full moon” counterpart. Such people are extremely persuasive orators who constantly challenge injustices or what they perceive to be corrupt powers.

The “full moon” Elder individual possesses great vision and inclined to operate more successfully in the background rather than pursuing a confrontational approach.

Elder Secondary Trees

November 25 to December 1 - Your Secondary Tree is: the Ash, whose motto is “Always Aiming Higher” or “The Ambition.” Ash individuals are uncommonly attractive, vivacious, impulsive and demanding. They do not care for criticism, can be egotistic and love to “play with fire.” Ambitious, intelligent and talented, Ash people are prone to allow the brain to rule the head, but they do take partnerships very seriously. It is important to an Ash individual that he or she maintain personal identity, freedom and independence. Nonetheless, Ashes make for trustworthy mates who are faithful, prudent and reliable. Ash people probably care more about the future than those born under any other jurisdiction and are concerned about making progress. If they set themselves a target which requires commitment, then they are willing to give up many things in order to reach that goal. At the peak of glory, Ash individuals often prove to possess a genuine greatness and they will undertake tremendous efforts in order to help others.

December 2 to December 11 - Your Secondary Tree is: the Hornbeam, whose motto is “Monument of Loyalty” or “The Good Taste.” Hornbeam individuals possess a cool beauty and exquisite taste. Although Hornbeams are concerned about their appearance, they are far from egotistical. They like their reasonable and disciplined lives to be as comfortable as possible. Hornbeam people look for kindness and acknowledgment in an emotional partner, though they are seldom happy with their own personal feelings. They are prone to mistrust and are never sure about the decisions they make, although they are the most conscientious characters. There is a tendency for Hornbeams to shoulder the responsibility for mistakes of others, it being more important in their eyes to promote tolerance and maintain harmony rather than respect rigid rules which demand a scapegoat.

December 12 to December 21 - Your Secondary Tree is: the Fig, whose motto is “Soul of Kindness” or “The Sensibility.” Fig individuals are very strong, independent and somewhat self-willed. They love life, their family and animals but cannot bear to be contradicted. Something of a social butterfly, Figs possess a good sense of humor, practical talent and intelligence. However, there is a tendency toward idleness and laziness. The sensitivity of Fig people can make them find life rather bitter, but they have the necessary strength to preserve a human susceptibility. Born on one of the shortest or longest days of the year, it may be more difficult for Fig individuals to find the right balance between spontaneity and reason... quietness and restlessness...sweetness and bitterness...than it is for others. It is in the Fig nature to switch back-and-forth between the two sides of this flexible personality, along with

a tendency to exaggerate from time-to-time.

December 22 - Your Secondary Tree is: the Beech, whose motto is "Biding Time" or "The Creative." Beech individuals have good taste and are concerned about personal appearance. They are good organizers of life and career, but tend to be somewhat materialistic. Beech people are good leaders, but ones who are hesitant to take unnecessary risks. They make for splendid lifetime companions and are religious about keeping fit and in good health.

December 23 - Your Secondary Tree is: Mistletoe. Mistletoe people are said to be solid achievers, as well as being extremely charismatic. Though capable of incredible personal success, they often prefer to spend their lives helping others. The Mistletoe individual is mysterious by nature and often reluctant to become too intimate with others. Such people have a great fear of failure and are seldom keen to take on the role of parenting. They tend to give much thought to a relationship prior to making any commitment. However, when Mistletoe individuals do fall in love, it is usually forever and they are totally devoted to their own parents. Mistletoe people view life as a great challenge and often distrust those who choose to take the easy path.

Elder Deity

The Elder deity is the Welsh God Pryderi, son of Pwyll Penn Annwn and the Goddess Rhiannon. According to legend, Pryderi was stolen away as a newborn infant by a nameless fiend who, upon a horse-thieving expedition, dropped the babe once more into the world when it was struck by a blow from the Guardian of the Horses.

Though not one of the official number among the Children of Llyr, Pryderi does appear to have been an honorary member by virtue of close association. Pryderi took the side of Bran in the conflict with Matholwch and was one of the seven survivors of that battle.

Traditionally, Pryderi represented the dark forces in opposition to (and as part of) the light. He was defeated in the Battle of the Trees. According to legend, Pryderi met his death at the hands of Gwydion, son of Don, in a single combat. He is said to be buried at Maen Tyriawg, above Y Felenrhyd.

Also associated with the Elder is The Cailleach, also known as Cailleach Beara and the Crone of Beare. In some parts of Ancient Britain, this deity was the Goddess of Winter, depicted as a blue-faced hag who was reborn every October 31 (Samhain). She brought the snow until the Goddess Brigit annually deposed her and she eventually turned to stone every April 30 (Beltaine). In later times, the mythical witch-like figure of "Black Annis" is believed to have derived from The Cailleach.

An ancient Goddess of the pre-Celtic people, The Cailleach was thought to control the Seasons and the Weather, as well as being the Goddess of Earth, Sky, Moon and Sun. In Scotland, The Cailleach was also known as Scota (from which the name Scotland originates) and said to be the earliest known ancestor of the Scots. Initially, Scotland was called Caledonia or the "Land Given By Cailleach".

Scota was probably once a Mother Goddess in Egypt, but her myth and origins have become shadowy with the passage of time. She was generally thought to be the daughter of the Pharaoh Cingris, but from that point, her history seems to diverge...even merging with Christian biblical figures. In many tales, she was the mother of Amergin the Bard; in others, she was the mother of Goidel, who gave his name to the Gaels. She is said to have died fighting the Tuatha de Danaan in the Milesian invasion and thought to be buried near a dolmen (a primitive stone altar) in County Kerry, Ireland.



Mayan Horoscope

The Mayan Horoscope is one of the most sophisticated inventions of an ancient Mesoamerican culture steeped in astrology and magic. The centerpiece of this system is a 260-day sacred "year" known as the Chol Qij, or count of days. The Chol Qij is used to time the Mayan ceremonies, such as the 8 Batz ritual. The Chol Qij is also used to foretell a person's character and destiny based upon which of the 260 days he or she was born, and thus it can be considered a kind of "Mayan Horoscope".

The Mayans used two calendars: the Chol Qij or Sacred Calendar which consisted of a 260-day year, and the Haab' or Vague Year which has a 365-day year. Both systems have at their basis a cycle of 20 days. The Sacred Calendar dates back to the Olmec civilization. The Mayans used it in combination with the twenty named day. However, the twenty days were ordered numerically in cycles of 13. Thus, the cycle starts 1-Imix, 2-Ik, 3-Akbal until 13-Ben. Then it would continue 1-Ix, 2-Men etc. The cycle finishes at 13-Ahau. See the names and meanings of the Mayan days near the end of the section.

In addition to the Chol Qij, the Mayan calendar consists of a 365-day count, a 9-day count, and a continuous count of days since 3114 B.C.

The 365-day Haab' calendar consisted of 18 months of 20 days and one shorter month of 5 days called Uayeb, an unlucky month. See the names of the Mayan months below. The first day of the month was called its seating. For example, the numbering of the month of Zip went as follows: the Seating of Zip, 1-Zip, 2-Zip etc.

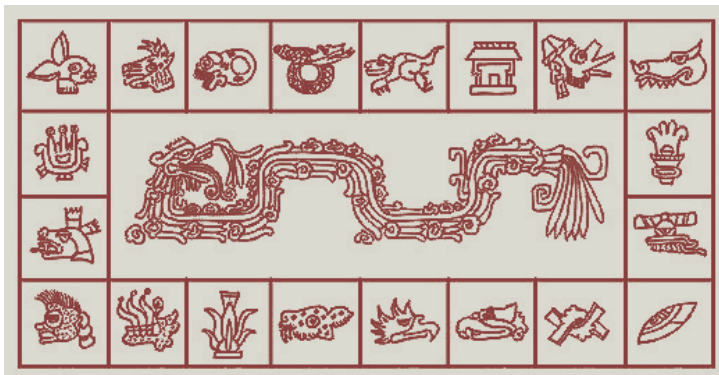
The two systems ran together so a certain day would have two names, its Chol Qij and its Haab' name. The first day of a cycle would be 1 Ixin Seating of Pop. The two cycles would go out of step and the cycle would only start again every 52 years, a Mayan 'century'.

The Mayans also had the Long Count Calendar which measured vast amounts of time. The Long Count Calendar is based on a 360 day year called a tun. Twenty tuns make a K'atun (7200 days) and twenty K'atuns make a b'ak'tun (144,000 days). Mayan glyphs Thirteen b'ak'tuns make a Great Cycle or a Sun. At the end of each Great Cycle, the Mayans believed that a huge catastrophe destroyed most of mankind and civilization needed to re-establish itself. At present, we are in the Fifth Sun which began on 11th August 3114 BC and will finish on 21st December 2012. The Mayans associated this date with new beginnings and re-birth, rather than endings such as the "end of the world".

Interestingly, Venus was seen as the bringer of strife, conflict and war. The rising and setting of Venus was seen as the most potent indicator of dark happenings. An eclipse was catastrophic.

For astrological purposes, the important information was which day you were born on. Priests and astrologers would consult the Book of Fate to find out information concerning the fate of the individual, the nation and religion. Because of the rotating calendar, people born at different times of the year could share the same birth symbol. The Aztec system of astrology was similar but varied in the names of the days and on other details. See the names of the Aztec (Nahua) days and months near the end of the section.

Note: This text offers a very simplified version with fixed dates as an example but a real Mayan horoscope is much more complex than that of our present western calendar.



The Moon of the Lizard - La Luna del Lagarto 13 December - 10 January

It changes (the color of) its skin at an instant. In this sense, the native of this sign is the same as the animal that is represented. Its personality is difficult to describe, in view of the fact that a single type of lizard type doesn't exist, but there are many different kinds. We should keep in mind that its main quality is the one of being able to adapt to the environment. But no one should be deceived, because these people don't have any kind of falsehoods nor do they have a hypocritical nature. On the contrary, they possess a heart of gold and they are very generous and even innocent.



The Moon of the Monkey - La Luna del Mono 11 January - 6 February

They possess a strength and physical resistance that is bomb-proof (iron-clad). He or she likes challenges and they have a soul of a Don Quijote. They are open



The Moon of the Falcon - La Luna del Halcón 7 February - 6 March

A sacred animal to the Mayans, it was considered that people born under its moon enjoyed exceptionally good luck all of his or her life. It was also said that, in having one of these, for the family it was a blessing for every member. Its character is strong and it has a very big ambition. Its sense of duty and responsibility are beyond all doubt, with the result that they worry too much about others. They have been born to lead and they hate to be given orders.



The Moon of the Jaguar - La Luna del Jaguar 7 March - 3 April

If anything is clear, the jaguars have their own ideas. In every moment and from a very early age, they know what they want and how to get it. Their main virtue is the passion that they put into everything. Which can also end up becoming a defect and cause them to lose opportunities. Another problem which they might face often in their lives originates from a desire of freedom, but they possess an innate sense of the justice such that they always find themselves in support of the weaker ones.



The Moon of the Fox - La Luna del Zorro 4 April - 1 May

They possess a heart of gold and they have some of the purest of intentions as (found in) few other signs. And it is such that in the Mayan culture, this animal was not astute and malicious as in our cultures, but diligent (watchful), ingenious and with a magnificent intuition. The second characteristic that defines those who are born under this sign is discretion. They will escape from the center of attention (the spotlight) and they evolve or grow better in the shadows. His or her place is the secondary plane, and it is not because they don't deserve to be first, but because they prefer their anonymity.



The Moon of the Snake - La Luna de la Serpiente 2 May - 29 May

This animal comes across in the collection of Mayan animals in the same fashion as that of the fox. It doesn't have any of the negative connotations that has been given to it in the West. Quite the opposite, it represents the redemptive spirit that illuminates the mind. They like to live well, but that doesn't mean that they don't have a strict and unwavering ethical code. Always refined and exquisite, the snake won't give its love to just anyone. It is very intelligent and convenient to have it as a friend rather than as a dangerous rival.



The Moon of the Squirrel - La Luna de la Ardilla 30 May - 26 June

Talkative and having vivacious eyes, the squirrel never needs to come up with brilliant ideas in order to move forward. Its trait, most certainly, is in the (art of) communication. Very social since childhood, they can become excellent public relations professionals, including any other kind of work which implies direct contact with people. They value friendship above everything else and they usually take up an intense social life. Among its defects, it is frequently having a change of opinion and it allows itself to get carried away with its fantasies.

**The Moon of the Tortoise - La Luna de la Tortuga 27 June - 26 July**

Whoever knows the fable of the hare and the tortoise will understand the wisdom very well, based on an infinite patience which the Mayan assigned to people born in this period, it is very difficult to alter somebody coming from this sign, but if so, when it does happen, the best thing is to give yourself hundred of kilometers of distance in between, because its anger can be terrible. They get all that they are determined to do without a hurry, without having to pause. They know that this is their best trait, and they very much adore their home and habitation.

**The Moon of the Bat - La Luna de la Murcielago 27 July - 22 August**

This is the sign of heroes, but also the sign of those who act in an ignorant or unknowing manner. These peoples are always driven by an idea of justice and they have an eagerness to be a leader, owing to their ability to garner respect in any situation. They have an innate religious sentiment that compels them to leap into spiritual matters. They complete whatever they start out to do, and no matter how much they might attempt to do things in the opposite way, they always end up in the center of any gathering. They stand out in their great capacity for conducting business.

**The Moon of the Scorpion - La Luna de la Alacrán 23 August - 19 September**

His (or her) great intelligence is one of the most characteristic traits of this sign, something which begins to be noticed from the most tender years of childhood. The Scorpion also possesses an excellent memory, which is as much a good thing as it is a bad thing, and although it is not negative, this is the one who will never forget an offense (or affront). He (or she) is jealous of his or her privacy and private life, so at times their best qualities remain hidden or covered up on account of their shyness. In spite of all of that, they are full of good feelings and they are happy to lend a helping hand to others.

**The Moon of the Deer - La Luna del Venado 20 September - 17 October**

One of the main features of the Deer is its power of seduction. People that belong to it have been born under the sign of beauty, and although physically some of their members are not so blessed (in their beauty), all radiate an irresistible aura. They are presumptuous (arrogant), creative, and unpunctual (untimely). They possess a great imagination and they dominate as well as anybody in the art of conversation. They need to be treated with a lot of affection, especially during childhood and, on the other hand, they detest discussions.

**The Moon of the Owl - La Luna de la Lechuza 18 October - 14 November**

The owl, a nocturnal and mysterious animal, is the most magical and profound sign in the whole Mayan horoscope. It possesses a special capacity to make the subconscious appear out of others, as well as to find things, people and lost or forgotten ideas. It also has a great sense for all the mystical and mysterious. Its main virtue is that its intuition will rarely fail them. When beginning a relationship, they can seem shy in that situation, but they open up completely when being loved.

**The Moon of the Peacock (Turkey) - La Luna del Pavo Real 15 November - 12 December**

The brilliant plumage of its tail reveals everything: the Peacock has been born to shine and to shine with its own brilliance in society. Original and creative, they are found to be impossible to pass by unnoticed. In love, as much as the man as the woman, they stand out

to be very passionate and they have a great capacity and deliverance. In the workplace they demonstrate a very competitive nature and since their most tender childhood, they will want to be the best in everything. This sign usually signifies one that is a giver and it produces very good actors.

**North American Native Astrology**

The Native American Astrological System, as practiced by the North American Indians, was in existence well before the first settlers arrived in the new world. In this system the spiritual alignment of an individual or clan is referred to as their totem. Below is a brief overview of each totem and moon, based on the birth date of the individual. Each totem corresponds to a specific element, animal, plant, stone, clan, and color.

**The Falcon : March 21 - April 19**

A time of awaking -

Element- Fire

Clan- Hawk

Wind- East wind

Falcon Character: observant, confident, open, direct and honest. Falcon People are passionate and independent, spontaneous and uncomplicated. They are wonderful friends.



The Beaver : April 20 - May 20

A time for Growth

Element- Earth

Clan- Tortoise

Wind- East Wind

Beaver Character: Industrious, untiring, and sensible in all things. Beaver people need for security, and stability. They relish comfort and sensuality, and rarely take risks.



The Deer : May 21 - June 20

A time for Blooming

Element- Air

Clan: Butterfly

Wind: East wind

Deer Character: sensitive, relaxed and carefree. Open-minded and intellectual. Deer people are flexible and have quick reaction. They like stimulating changes and value open communication.



The Woodpecker : June 21 - July 21

A time of consolidation

Element- Water

Clan- Frog

Wind- South Wind

Woodpecker Character: Desire emotional involvement, but carefully protect their boundaries. At times moody, Woodpecker people are deeply caring, especially of family and friends.



The Salmon : July 22 - Aug 21

A time of Ripening

Element- Fire

Clan- Hawk

Wind- South Wind

Salmon Character: self-confident with a big heart and sunny disposition. Willing to accept responsibility they are innate leaders with good judgment and enjoy recognition.



The Brown Bear : Aug 22 - Sept 21

A time of harvest

Element- Earth

Clan- Tortoise

Wind- South Wind

Brown bear Character: practical, rational, focused and independent. Bear people are reliable, industrious, and have an eye for detail. They are often perfectionists and are familiar with stress.



The Raven : Sept 22 - Oct 22

A time for Retreat

Element- Air

Clan- Butterfly

Wind- West Wind

Raven Character: harmonious, diplomatic and accommodating. Raven people have a strong sense of fairness and justice. They are careful observers, but dislike confrontations.



The Serpent : Oct. 23 - Nov 22

A time of Death and Transformation

Element- Water

Clan- Frog

Wind- West Wind

Serpent Character: attractive, fascinating, and formidable. Serpent people pursue their goals vigorously and logically. They are attracted to the dark and mysterious.



The Owl : Nov. 23 - Dec 21

A time of Hibernation

Element - Fire

Clan - Hawk

Wind - West Wind

Owl Character: idealists who strive for a deeper understanding and a more profound truth. Owl people need freedom and independence, and they like a good debate for exchanging new ideas.



The Goose : Dec 22-Jan 19

A time of Renewal

Element - Earth

Clan - Tortoise

Wind - North Wind

Goose Character: persistent, perseverance, realistic, sensible and responsible. Goose people prefer quality above quantity. They also have remarkable energy and vitality.



The Otter : Jan 20 - Feb 18

A time of Preparation

Element - Air

Clan - Butterfly

Wind - North Wind

Otter Character: creative and humorous, full of hope and supporting positive changes in society at large. Rebels and revolutionaries.



The Wolf : Feb 19 - March 20

A time of Renewal

Element - Water

Clan - Frog

Wind - North Wind

Wolf Character: Helpful, empathetic, devoted, sensitive and keenly aware of needs of others. Wolf people need solitude for recharging and for delighting in dreams and fantasy.





The Winds

In Native astrology the winds function similar to how the elements work in traditional western astrology. Earth, wind, Fire and water are replaced with wind directions to break the signs into four families. Then the various signs are assigned a Clan and Element in addition to the wind to further enhance the signs meanings.

EAST WIND - The wind of spring (Falcon, Beaver, and deer) supports astuteness and spirituality.

SOUTH WIND - The wind of summer (woodpecker, salmon, and brown bear), promotes perception and emotion.

WEST WIND - The wind of fall (Raven, Serpent, and owl), promotes insight and knowledge.

NORTH WIND - The wind of winter (Goose, Otter, and Wolf), supports recuperation and renewal.

The Clans & Elements



TORTOISE CLAN (earth) - Stands for corporeality, focus, stability, structure and orderliness.



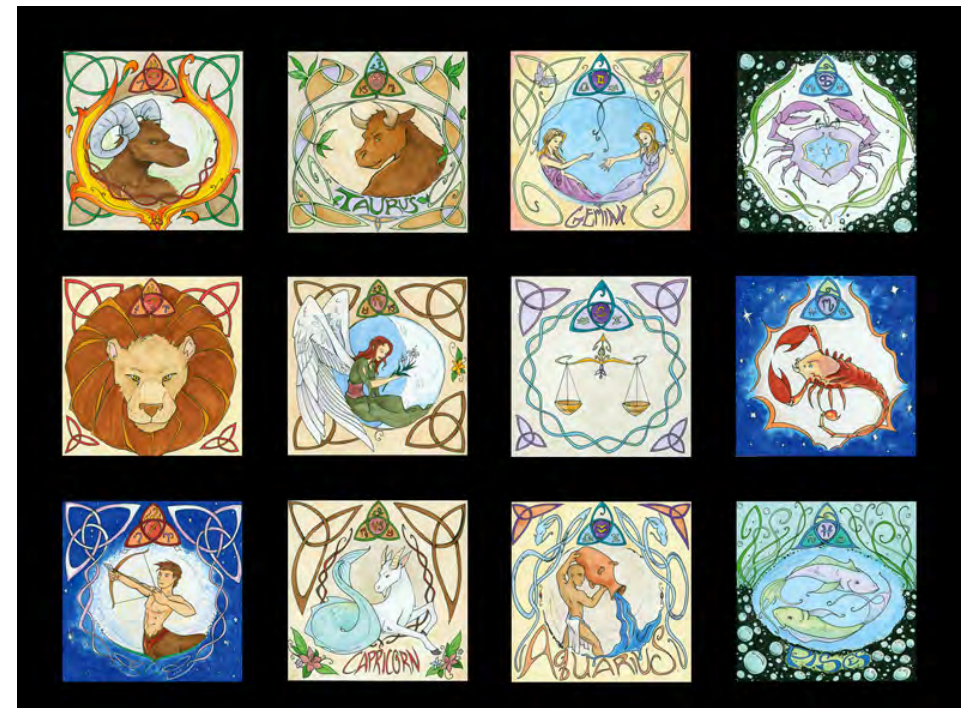
BUTTERFLY CLAN (Air) - Represents intellect, Thought, interest, movement and flexibility.



HAWK CLAN (Fire) - Indicates spirit, creativity, intention and action.



FROG CLAN (Water) - Contains soulfulness, emotions, receptivity, devotion, silence and empathy.



Astrological Gods

<u>GOD NAME</u>	<u>CULTURAL LOCATION</u>	<u>ASTROLOGICAL ASSOCIATION</u>
Al Shua	India goddess	Ursa Major
Anael	Babylonian goddess	Astral Light
Andromeda	Greek goddess	Andromeda
Anunit	Chaldean goddess	Morning star
Artemis	Greek goddess	Moon
Asase Afua	Ghanian goddess	Venus
Asherali	Canaanite goddess	Moon

Ashirat	Akkad goddess	Evening star
Astarte	Phoenician goddess	Moon
Astarte	Syrian goddess	Moon
Astraeos	Greek god	Astronomy/Starlight
Astrik	Slavic goddess	Venus
Athena	Greek goddess	Astronomy/Science
Atira	Pawnee goddess	Evening star
Auset	Egyptian goddess	Sirius
Bahu	India goddess	Leo
Berenice	Egyptian goddess	Coma Berenices
Callisto	Greek goddess	Ursa Major
Chandra	Vedic god	Moon
Chang-O	Chinese goddess	Moon
Chimalmat	Mayan goddess	Little Dipper
Chulavete	Mexican goddess	Morning star
Cista	Persian goddess	Morning star
Citlalicue	Aztec goddess	Milky Way
Coyolxauhqui	Aztec goddess	Moon
Diana	Roman goddess	Moon
Dou Mou	Chinese goddess	North Star
Gidja	Australian god	Moon
Grahamatrka	Nepalese goddess	Stellar deity
Hecate	Greek goddess	Moon
Hihankara	Lakota goddess	Milky Way
Hoy Kong	Chinese goddess	Ursa Minor
Hsieh T'ien-chun	Chinese god	Astronomy/Saturn
Iae	Brazilian god	Moon
Igaluk	Eskimo god	Moon
Inanna	Sumerian goddess	Moon
Ishtar	Mesopotamian goddess	Moon
Isi	India goddess	Argo Navis
Isis	Egyptian goddess	Moon
Itzamna	Mayan god	Moon
Ix Chel	Mayan goddess	Moon
Ix Ch'up	Mayan goddess	Moon
Jia Shi	Chinese goddess	Stellar deity
Jupiter	Roman god	Astronomy/the Planet
Kefa	Egyptian goddess	the Great Bear
Khons	Egyptian god	Moon
Krittika	India goddesses	Pleiades
<u>GOD NAME</u>	<u>CULTURAL LOCATION</u>	<u>ASTROLOGICAL ASSOCIATION</u>
Luna	Roman goddess	Moon
Ma Shi	Chinese goddess	Stellar deity
Mama Quilla	Incan goddess	Moon
Mao Meng	Chinese god	Astronomy/Jupiter/Mercury
Marina	Slavic goddess	Moon
Massassi	Zimbabwe goddess	Morning star
Menulis	Lithuanian god	Moon
Mercury	Roman god	Astronomy/Mercury
Merope	Greek goddess	Pleiades



Metzli	Aztec goddess	Moon
Minerva	Roman goddess	Astronomy/Science
Mixcoatl	Aztec god	Astronomy/Stars
Morongu	Zimbabwe goddess	Evening star
Mwuets	Zimbabwe god	Moon
Nanai	Sumerian goddess	Stellar deity
Nanna	Norse goddess	Moon
Nok	Chinese goddess	Aquarius
Ntoa	Ghanian goddess	Venus
Osiris	Egyptian god	Moon
Pah	Pawnee goddess	Moon
Paiowa	Yana goddess	Evening star
Paumamasi	Hindu goddess	Full moon
Pleiades	Greek goddesses	Pleiades
Reret	Egyptian goddess	Draco
Sadamuna	Sumerian goddess	New moon
Sarasvati	Hindu/Vedic goddess	Astronomy/Science
Saturn	Roman god	Astronomy/the Planet
Selene	Greek goddess	Moon/Stars
Serqet	Egyptian goddess	Morning star
Seta	Kenyan goddess	Pleiades
Seven Macaw	Mayan god	Big Dipper
Shashaya	Tanzanian goddess	Morning star
Sin	Mesopotamian god	Moon
Solbon	Slavic goddess	Morning star/Evening star
Soma	Hindu god	Moon
Tanit	Canaanite goddess	Moon
Tara	India goddess	Stars
Tecciztecatl	Aztec god	Moon
Thoth	Egyptian god	Astronomy/Science/Moon
Topogh	Kenyan goddess	Evening star
Tsuki-yomi	Japanese god	Moon
Tzitzimime	Aztec goddesses	Stars
Urania	Greek goddess	Astronomy
Urgel	Slavic god	Pleiades
Vakarine	Slavic goddess	Evening star
Xbaquiyalo	Mayan goddess	Venus
Xochiquetzal	Aztec goddess	Moon
Yarikh	Canaanite god	Moon
Yu Nu	Chinese goddess	Leo



There are many fine representations of the zodiac in Egyptian temple reliefs but, although once thought to date back several millennium before the birth of Christ, recent dating techniques suggest they cannot be considered older than the 3rd century BC. One of the most spectacular is the ceiling relief from the temple of Hathor at Dendara (shown above). Roz Park, in her forthcoming book *Astrology in Ancient Egypt*, believes the mural depicts a celebration of the convergence of the sidereal and tropical zodiacs and the ingress of the vernal point into Pisces. The zodiacal constellations are easily recognizable and the planets are located in the signs of their exaltations, with the 36 decans clearly marked around the perimeter. Evidence shows that the concept of the zodiac is not native to Egypt because it is predated by the Mesopotamians by two centuries. What is clear, however, is that the zodiac contains much Egyptian imagery and mysticism which may have been imported into Mesopotamia at some earlier, unknown date, but which certainly continues to influence astrology as it is practiced today.